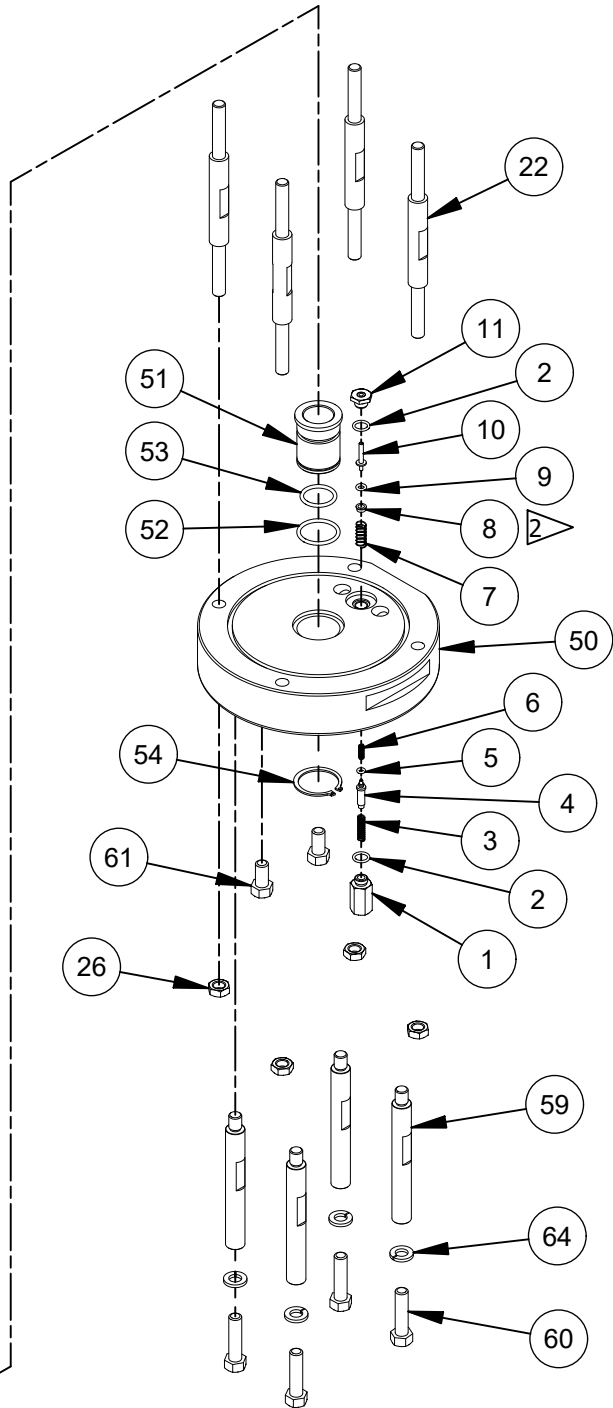


NOTE: A LIGHT COAT OF SUPER O LUBE IS RECOMMENDED ON THE UPPER AND LOWER PILOT VALVES

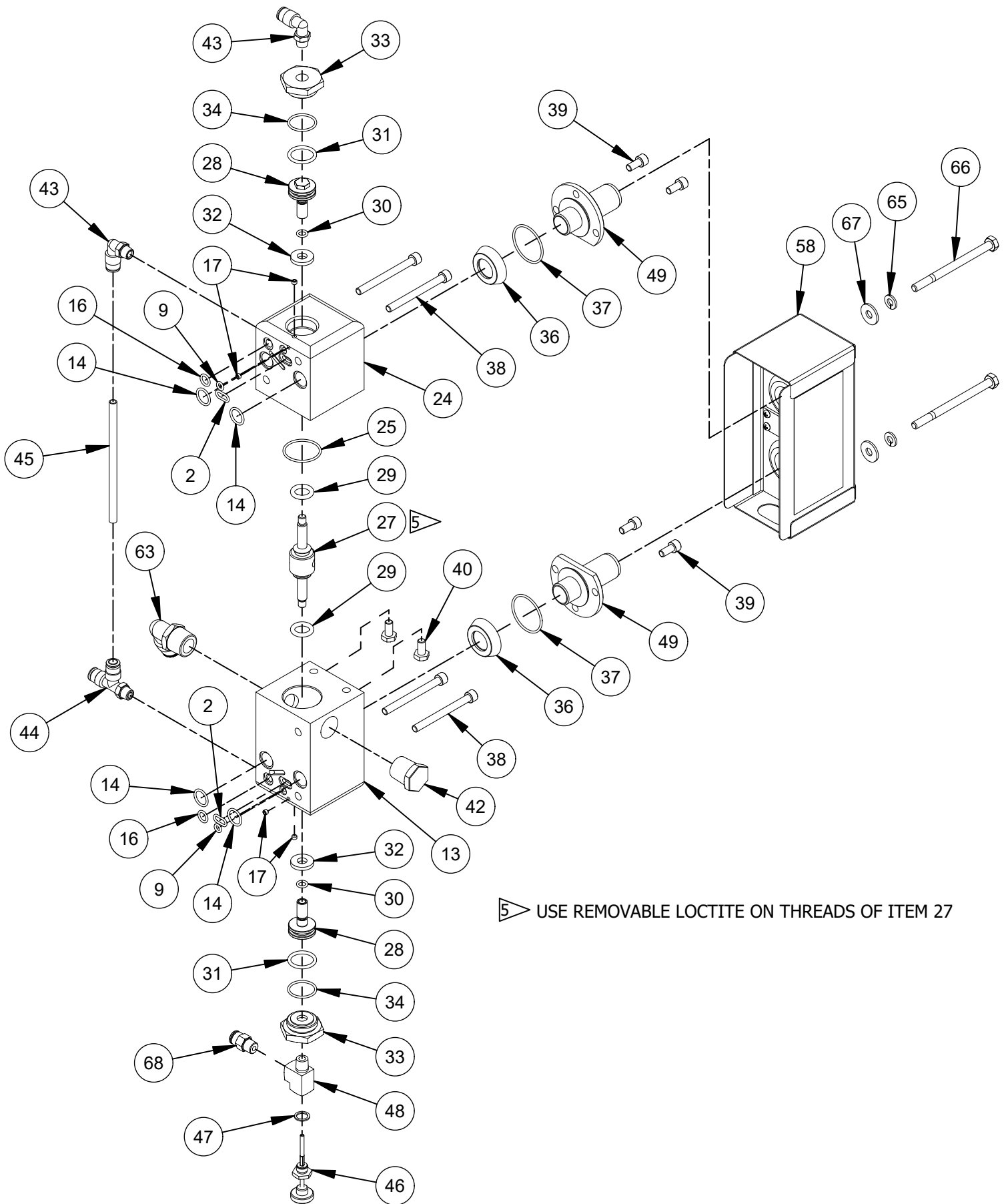


- ▶ USE REMOVABLE LOCTITE ON THREADS OF ITEM 62
- ▶ INSTALL ITEM 19 WITH COUNTERBORE DOWN
- ▶ INSTALL ITEM 8 WITH FLANGE UP
- ▶ INSTALL ITEM 8 WITH FLANGE DOWN

MAGNUM VENUS PRODUCTS

5" PATRIOT POWER HEAD

PAT-PH-5000-INV2



MAGNUM VENUS PRODUCTS

5" PATRIOT POWER HEAD	PAT-PH-5000-INV2
-----------------------	------------------

Parts List			
ITEM	PART NUMBER	QTY	DESCRIPTION
	1 MPH-2541	2	SPRING HOUSING- PILOT VALVE
*	2 O-B-012	6	O-RING
	3 MPH-2533	2	COMPRESSION SPRING
	4 MPH-2540	2	INLET ROD- PILOT VALVE
*	5 O-U-006	2	O-RING
	6 MPH-2526	2	SPRING
	7 MPH-2528	2	SPRING
	8 MPH-2512	2	SEAL GUIDE- PILOT VALVE
*	9 O-B-008	4	O-RING
	10 MPH-2513	2	VALVE STEM- PILOT VALVE
	11 MPH-2511-01	2	STEM SEAL ASSY- PILOT VALVE
*	12 O-B-159	2	O-RING
	13 PAT-PH-5002	1	LOWER VALVE BLOCK
*	14 O-B-014	4	O-RING
*	16 O-B-011	2	O-RING
	17 F-SS-832-02-SS	4	SS SET SCREW
	18 PAT-PH-5003	1	CYLINDER - Ø5"
	19 MPH-5006	1	PISTON - Ø5"
*	20 O-B-425	1	O-RING
*	21 O-B-415	2	O-RING
	22 PAT-PH-5006	4	TIE ROD - 2" STROKE
	23 PAT-PH-5012	1	UPPER END CAP - 5"
	24 PAT-PH-5001	1	UPPER VALVE BLOCK
*	25 O-B-024	1	O-RING
	26 F-HN-06F	8	HEX NUT
	27 PAT-PH-5005	1	POPPET VALVE - 2" STROKE
	28 MPH-2517	2	VALVE PISTON
*	29 O-U-206-90	2	O-RING
*	30 O-D-010-90	2	O-RING
*	31 O-B-116	2	O-RING
	32 MPH-3262	2	PISTON STOP
	33 MPH-2521	2	VALVE END CAP
*	34 O-B-019	2	O-RING
	35 7205-2-26	1	EXTERNAL SNAP RING
*	36 MPH-5010	2	DIAPHRAGM
*	37 O-B-026	2	O-RING
	38 F-CS-04C-40-SS	4	SOCKET HEAD CAP SCREW
	39 F-CS-04C-08-SS	4	SOCKET HEAD CAP SCREW
	40 F-HB-04C-08	2	HEX BOLT
	42 PF-HP-08	1	HEX PLUG
	43 MPH-2539	2	MALE ELBOW
	44 MPH-2538	1	MALE POLY TEE FITTING
	45 MS-2052-1	.313 FT	TUBING
	46 MPH-2546-01	1	RESET STEM ASSEMBLY

MAGNUM VENUS PRODUCTS

5" PATRIOT POWER HEAD

PAT-PH-5000-INV2

Parts List			
ITEM	PART NUMBER	QTY	DESCRIPTION
47	MPH-2545	1	SEAL
48	PF-ST-02-BR	1	TEE FITTING
49	MPH-5009	2	EXHAUST PORT
50	PAT-PH-5004	1	LOWER END CAP - 5" POWER HEAD
51	VPH-4254	1	BUSHING- 7/8 DIA. PISTON ROD
* 52	O-B-121	1	O-RING
* 53	O-B-118	2	O-RING
54	MPH-3261	1	SNAP RING - EXTERNAL
55	PAT-PH-5007	1	UPPER BUSHING
* 56	O-B-127	1	O-RING
57	PAT-PH-5009	1	LOWER ROD
58	PAT-PH-5010-01	1	MUFFLER ASSEMBLY
59	PAT-PH-5011	4	TIE ROD
60	F-HB-06C-24-GR8	4	HEX BOLT
61	F-HB-06C-12	2	HEX BOLT
62	PAT-PH-5008	1	UPPER ROD ASSY
63	06561	1	1/2 SWIVEL ELBOW
64	F-SW-06	4	LOCK WASHER - Inch
65	F-SW-04-SS	2	LOCK WASHER
66	F-HB-04C-56-SS	2	HEX BOLT
67	F-FW-04	2	FLAT WASHER
68	07223	1	MALE CONNECTOR

* ASTERISKS DENOTE PARTS INCLUDED IN PAT-PH-5000-SK SEAL KIT

OPTIONAL PARTS AND ASSEMBLIES

PART No.	QTY.	DESCRIPTION
MPH-2542	1	RESET BUTTON ASSEMBLY
PAT-PH-SB-XL	1	SHIFT BLOCK ASSEMBLY

MAGNUM VENUS PRODUCTS

5" PATRIOT POWER HEAD

PAT-PH-5000-INV2