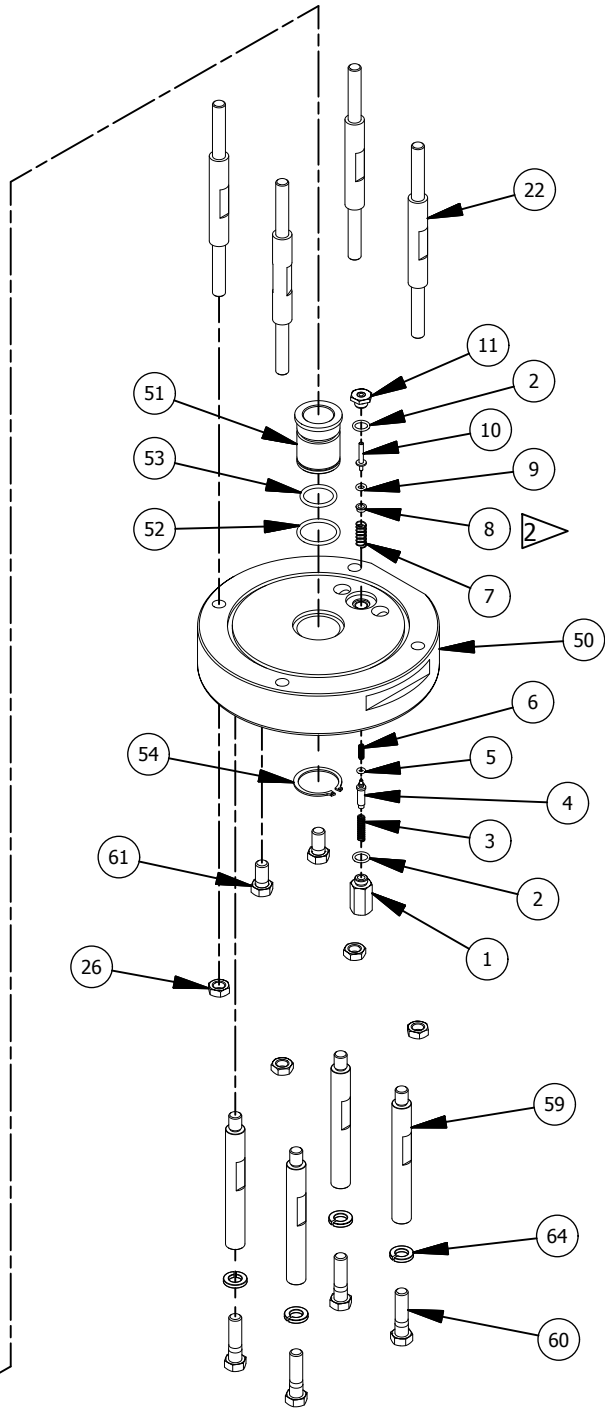


NOTE: A LIGHT COAT OF SUPER O LUBE IS RECOMMENDED ON THE UPPER AND LOWER PILOT VALVES

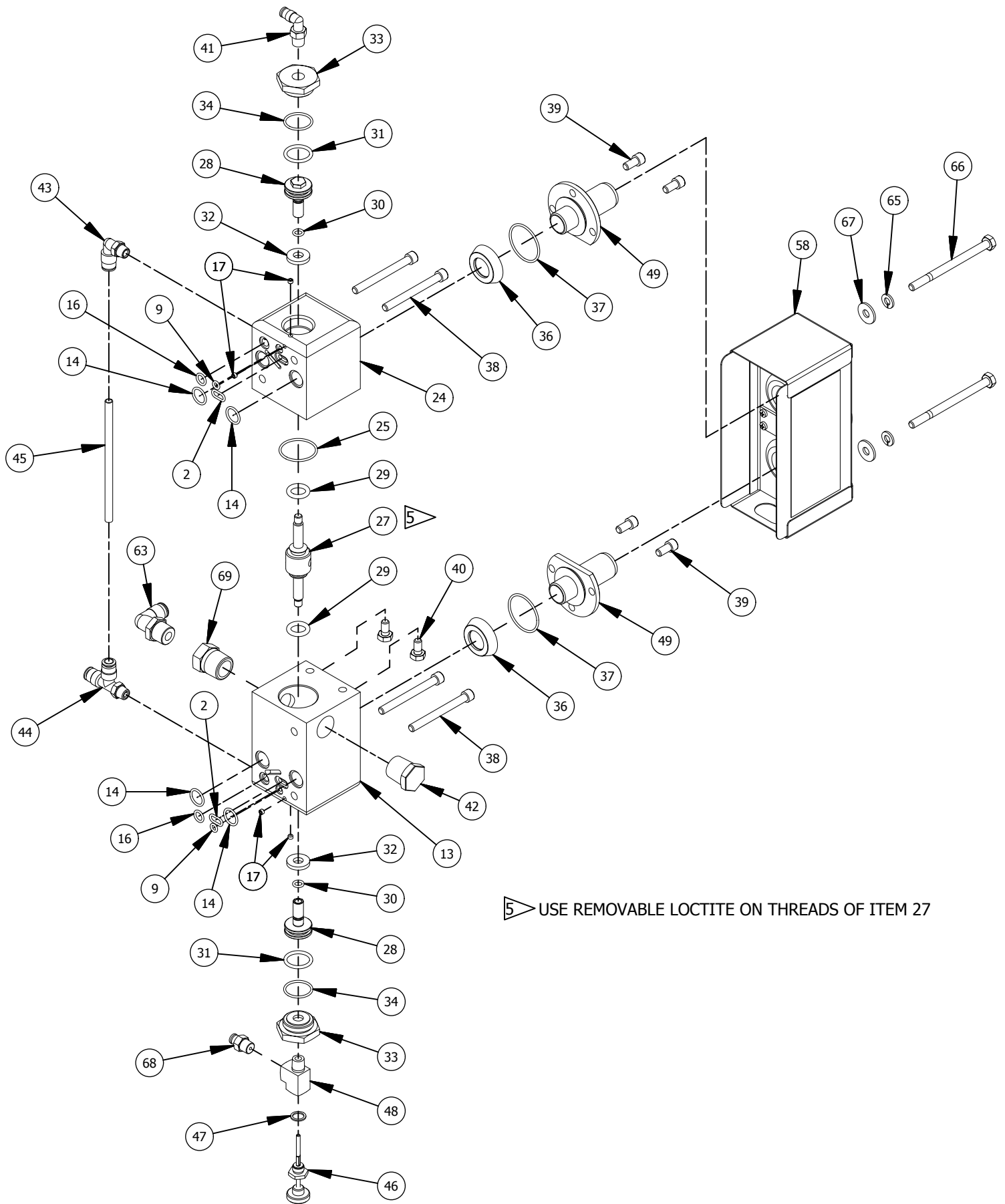


- ▷ USE REMOVABLE LOCTITE ON THREADS OF ITEM 62
- ▷ INSTALL ITEM 19 WITH COUNTERBORE DOWN
- ▷ INSTALL ITEM 8 WITH FLANGE UP
- ▷ INSTALL ITEM 8 WITH FLANGE DOWN

# MAGNUM VENUS PLASTECH

5" PATRIOT POWER HEAD

PAT-PH-5000-INV



5 USE REMOVABLE LOCTITE ON THREADS OF ITEM 27

# MAGNUM VENUS PLASTECH

5" PATRIOT POWER HEAD	PAT-PH-5000-INV
-----------------------	-----------------

Parts List				
ITEM	PART NUMBER	QTY	DESCRIPTION	
	1	MPH-2541	2	SPRING HOUSING- PILOT VALVE
*	2	O-B-012	6	O-RING
	3	MPH-2533	2	COMPRESSION SPRING
	4	MPH-2540	2	INLET ROD- PILOT VALVE
*	5	O-U-006	2	O-RING
	6	MPH-2526	2	SPRING
	7	MPH-2528	2	SPRING
	8	MPH-2512	2	SEAL GUIDE- PILOT VALVE
*	9	O-B-008	4	O-RING
	10	MPH-2513	2	VALVE STEM- PILOT VALVE
	11	MPH-2511-01	2	STEM SEAL ASSY- PILOT VALVE
*	12	O-B-159	2	O-RING
	13	PAT-PH-5002	1	LOWER VALVE BLOCK
*	14	O-B-014	4	O-RING
*	16	O-B-011	2	O-RING
	17	F-SS-832-02-SS	4	SS SET SCREW
	18	PAT-PH-5003	1	CYLINDER - Ø5"
	19	MPH-5006	1	PISTON - Ø5"
*	20	O-B-425	1	O-RING
*	21	O-B-415	2	O-RING
	22	PAT-PH-5006	4	TIE ROD - 2" STROKE
	23	PAT-PH-5012	1	UPPER END CAP - 5"
	24	PAT-PH-5001	1	UPPER VALVE BLOCK
*	25	O-B-024	1	O-RING
	26	F-HN-06F	8	HEX NUT
	27	PAT-PH-5005	1	POPPET VALVE - 2" STROKE
	28	MPH-2517	2	VALVE PISTON
*	29	O-U-206-90	2	O-RING
*	30	O-D-010-90	2	O-RING
*	31	O-B-116	2	O-RING
	32	MPH-3262	2	PISTON STOP
	33	MPH-2521	2	VALVE END CAP
*	34	O-B-019	2	O-RING
	35	7205-2-26	1	EXTERNAL SNAP RING
*	36	MPH-5010	2	DIAPHRAGM
*	37	O-B-026	2	O-RING
	38	F-CS-04C-40	4	CAP SCREW
	39	F-CS-04C-08-SS	4	SOCKET HEAD CAP SCREW
	40	F-HB-04C-08	2	HEX BOLT
	41	PTF90-02-4MM	1	MALE ELBOW
	42	PF-HP-08	1	HEX PLUG
	43	MPH-2539	1	MALE ELBOW
	44	MPH-2538	1	MALE POLY TEE FITTING
	45	MS-2052-1	.313 FT	POLY TUBE
	46	MPH-2546-01	1	RESET STEM ASSEMBLY
	47	MPH-2545	1	SEAL
	48	PF-ST-02-BR	1	TEE FITTING
	49	MPH-5009	2	EXHAUST PORT
	50	PAT-PH-5004	1	LOWER END CAP - 5" POWER HEAD
	51	VPH-4254	1	BUSHING- 7/8 DIA. PISTON ROD
*	52	O-B-121	1	O-RING
*	53	O-B-118	2	O-RING
	54	MPH-3261	1	SNAP RING - EXTERNAL
	55	PAT-PH-5007	1	UPPER BUSHING
*	56	O-B-127	1	O-RING
	57	PAT-PH-5009	1	LOWER ROD
	58	PAT-PH-5010-01	1	MUFFLER ASSEMBLY
	59	PAT-PH-5011	4	TIE ROD
	60	F-HB-06C-24-GR8	4	HEX BOLT
	61	F-HB-06C-12	2	HEX BOLT
	62	PAT-PH-5008	1	UPPER ROD ASSY
	63	PTF90-06-05	1	MALE ELBOW
	64	F-SW-06	4	LOCK WASHER
	65	F-SW-04-SS	2	LOCK WASHER
	66	F-HB-04C-56-SS	2	HEX BOLT
	67	F-FW-04	2	FLAT WASHER
	68	PTF-02-4MM	1	MALE CONNECTOR
	69	PF-RB-08-06	1	BUSHING FITTING

OPTIONAL PARTS AND ASSEMBLIES  
PARTS LIST

PART No.	QTY	DESCRIPTION
MPH-2542	1	RESET BUTTON ASSY
PAT-PH-SB-XL	1	SHIFT BLOCK ASSY

REPAIR KITS

PART No.	DESCRIPTION
PAT-PH-5000-SK	SEAL KIT

\* ASTERISKS DENOTE PARTS IN SEAL KIT

# MAGNUM VENUS PLASTECH

5" PATRIOT POWER HEAD

PAT-PH-5000-INV