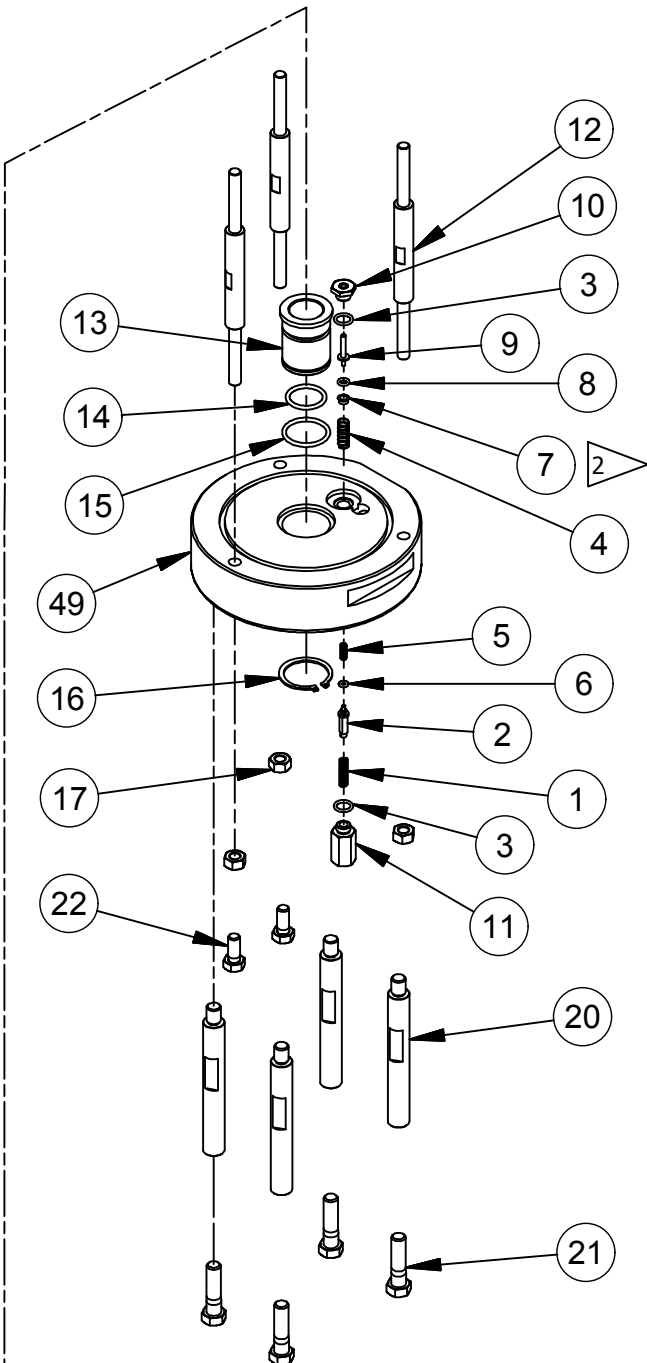
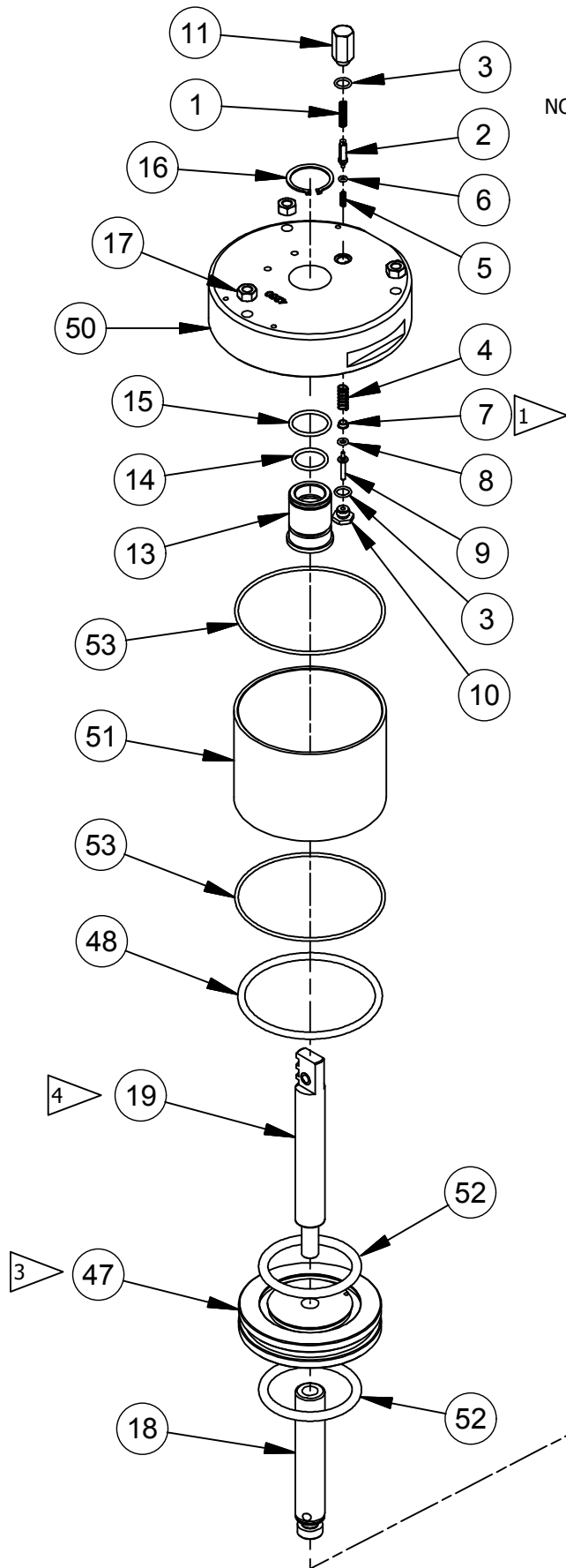


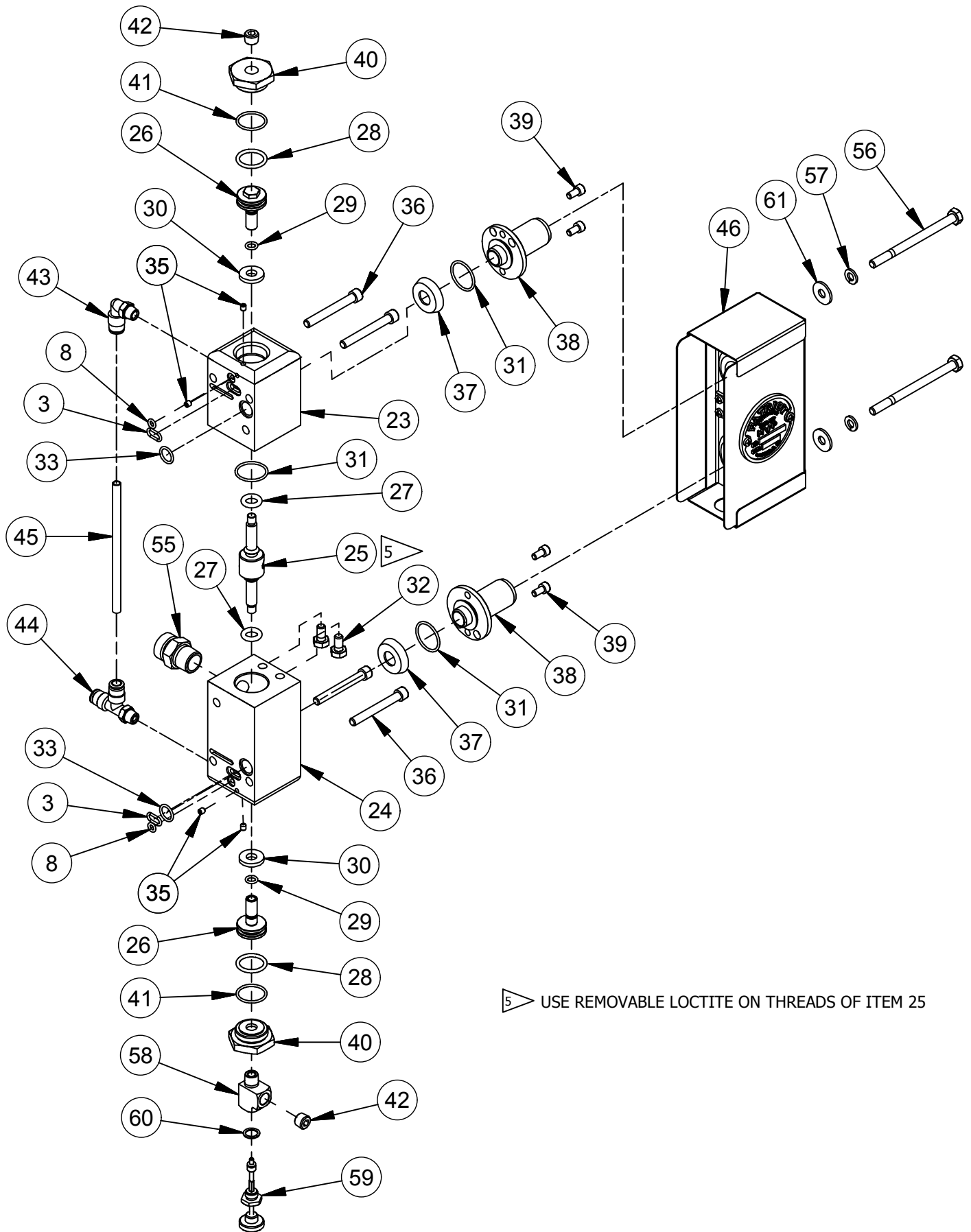
NOTE: A LIGHT COAT OF SUPER O LUBE IS RECOMMENDED ON THE UPPER AND LOWER SIGNAL VALVES



- 1 INSTALL ITEM 7 FLANGE DOWN
- 2 INSTALL ITEM 7 FLANGE UP
- 3 INSTALL ITEM 47 WITH COUNTERBORE DOWN
- 4 USE REMOVABLE LOCTITE ON THREADS OF ITEM 19

# MAGNUM VENUS PLASTECH

4-1/4" PATRIOT POWER HEAD PAT-PH-4250



# MAGNUM VENUS PLASTECH

4-1/4" PATRIOT POWER HEAD	PAT-PH-4250
---------------------------	-------------

**4-1/4" POWER HEAD PARTS LIST**

ITEM	PART NUMBER	QTY	DESCRIPTION
1	MPH-2533	2	COMPRESSION SPRING
2	MPH-2540	2	INLET ROD- PILOT VALVE
*	3	O-B-012	O-RING
*	4	MPH-2528	SPRING
*	5	MPH-2526	SPRING
*	6	O-U-006	O-RING
*	7	MPH-2512	SEAL GUIDE- PILOT VALVE
*	8	O-B-008	O-RING
	9	MPH-2513	VALVE STEM- PILOT VALVE
	10	MPH-2511-01	STEM SEAL ASSY- PILOT VALVE
	11	MPH-2541	SPRING HOUSING- PILOT VALVE
	12	PAT-PH-3206	TIE ROD - 2" STROKE P.H.
	13	VPH-4254	BUSHING- 7/8 DIA. PISTON ROD
*	14	O-B-118	O-RING
*	15	O-B-121	O-RING
	16	MPH-3261	SNAP RING - EXTERNAL
	17	F-HN-05F	HEX NUT
	18	PAT-PH-5009	LOWER ROD
	19	PAT-PH-5008	UPPER ROD ASSY
	20	PAT-PH-5011	TIE ROD
	21	F-HB-06C-24-GR8	HEX BOLT
	22	F-HB-05C-12	HEX BOLT
	23	PAT-PH-3201	UPPER VALVE BLOCK
	24	PAT-PH-3202	LOWER VALVE BLOCK
	25	PAT-PH-3205	VALVE ROD POPPET
	26	MPH-2517	VALVE PISTON
*	27	O-U-204-90	O-RING
*	28	O-B-116	O-RING
*	29	O-D-010-90	O-RING
	30	MPH-3262	PISTON STOP
*	31	O-B-020	O-RING
	32	F-HB-04C-08	HEX BOLT
*	33	O-B-013	O-RING
	35	F-SS-832-02-SS	SET SCREW
	36	F-CS-04C-32-SS	SOCKET HEAD CAP SCREW
*	37	MPH-2529	DIAPHRAGM
	38	MPH-2522	VALVE EXHAUST PORT
	39	F-CS-1024-06-SS	CAP SCREW
	40	MPH-2521	VALVE END CAP
*	41	O-B-019	O-RING
	42	PF-AP-02-SS	PIPE PLUG
	43	MPH-2539	MALE ELBOW
	44	MPH-2538	MALE POLY TEE FITTING
	45	MS-2052-1	.40ft POLY TUBE
	46	PAT-PH-3210-01	MUFFLER ASSY. -2" STROKE
	47	VPH-4251	PISTON
*	48	O-B-344	O-RING
	49	PAT-PH-4204	LOWER END CAP
	50	PAT-PH-4212	UPPER END CAP
	51	PAT-PH-4203	CYLINDER
*	52	O-B-409	O-RING
*	53	O-B-156	O-RING
	55	PF-HN-06-08S	HOSE ADAPTER
	56	F-HB-04C-56-SS	HEX BOLT
	57	F-SW-04-SS	1/4" LOCK WASHER
	58	PF-ST-02-BR	TEE FITTING
	59	MPH-2546-01	RESET STEM ASSEMBLY
	60	MPH-2545	SEAL
	61	F-FW-04	FLAT WASHER

**OPTIONAL PARTS AND ASSEMBLIES**

PART No.	QTY.	DESCRIPTION
MPH-2542	1	RESET PUTTON ASSY
PAT-PH-SB	1	SHIFT BLOCK ASSY

\* ASTERISKS DENOTE PARTS INCLUDED IN PAT-PH-4250-SK SEAL KIT

# MAGNUM VENUS PLASTECH

4-1/4" PATRIOT POWER HEAD

PAT-PH-4250