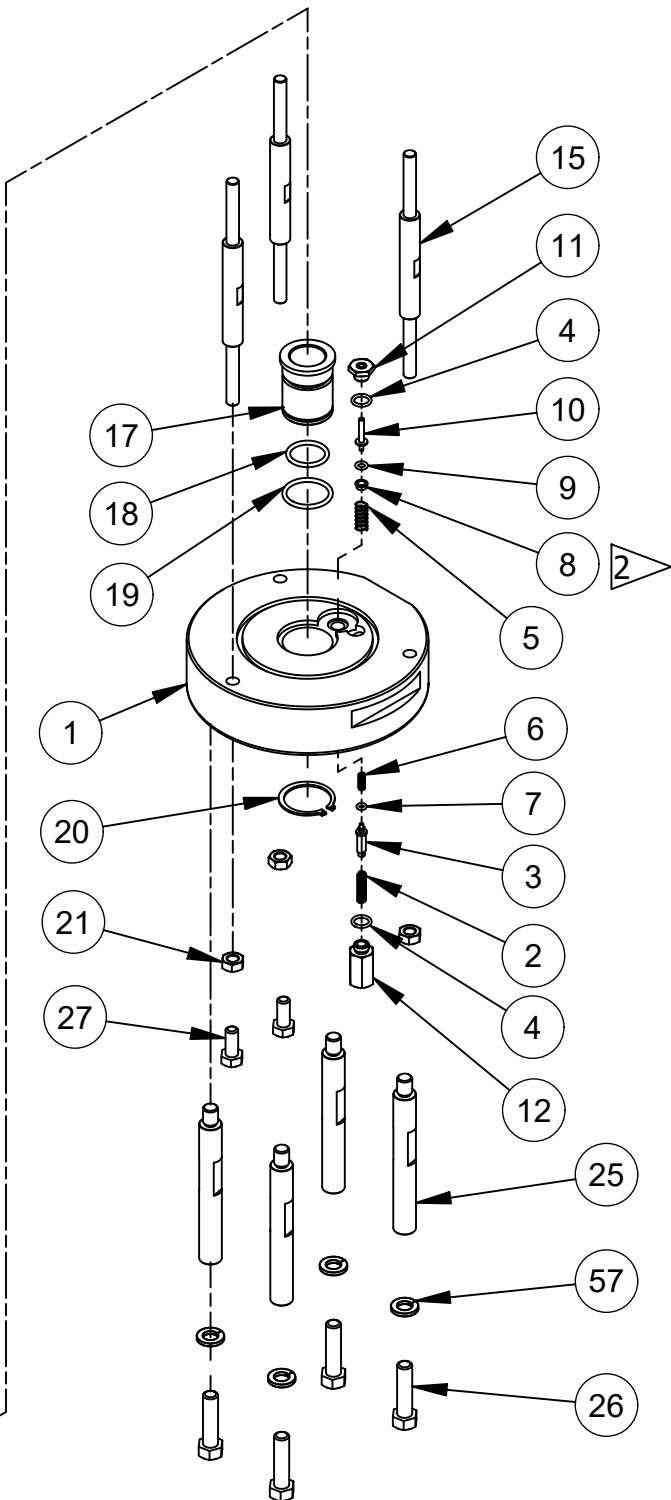
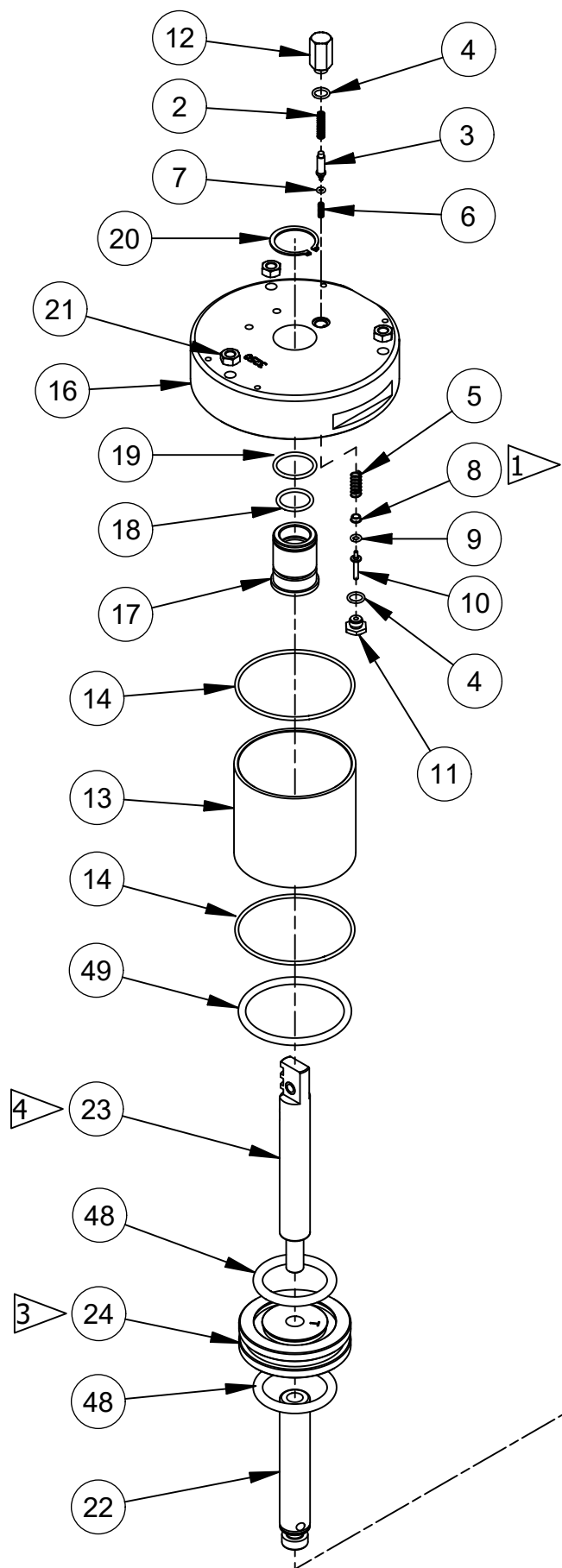


NOTE: A LIGHT COAT OF SUPER O LUBE IS RECOMMENDED ON THE UPPER AND LOWER PILOT VALVES

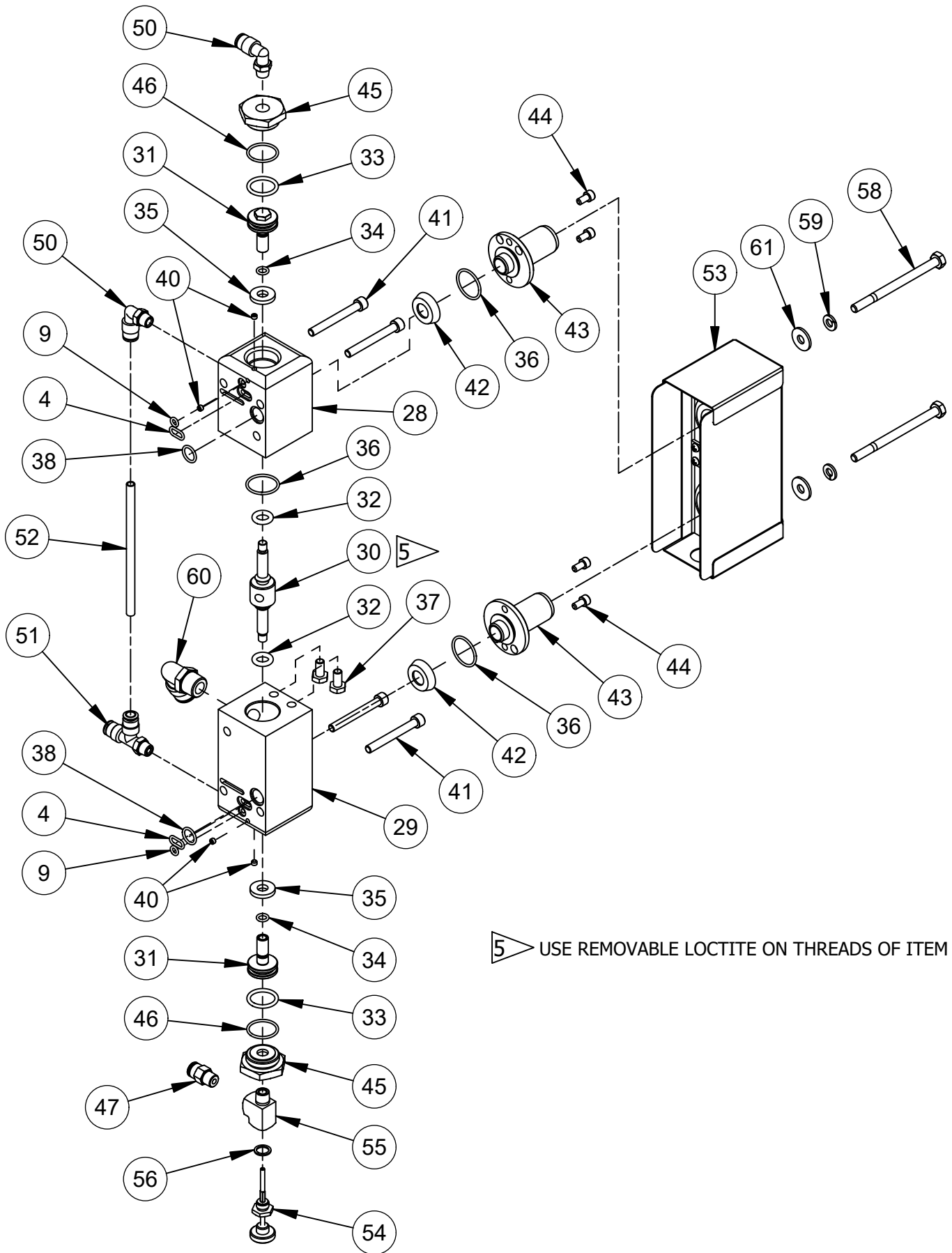


- 1 ▷ INSTALL ITEM 8 FLANGE DOWN
- 2 ▷ INSTALL ITEM 8 FLANGE UP
- 3 ▷ INSTALL ITEM 24 WITH COUNTERBORE DOWN
- 4 ▷ USE REMOVABLE LOCTITE ON THREAD OF ITEM 23

MAGNUM VENUS PRODUCTS

3.25" POWER HEAD

PAT-PH-3250-INV2



MAGNUM VENUS PRODUCTS

3.25" POWER HEAD	PAT-PH-3250-INV2
------------------	------------------

PAT- PH-3250 PARTS LIST				
ITEM	PART NUMBER	QTY	DESCRIPTION	
	1	PAT-PH-3204	1	LOWER END CAP
	2	MPH-2533	2	COMPRESSION SPRING
	3	MPH-2540	2	INLET ROD- PILOT VALVE
*	4	O-B-012	6	O-RING
	5	MPH-2528	2	SPRING
	6	MPH-2526	2	SPRING
*	7	O-U-006	2	O-RING
	8	MPH-2512	2	SEAL GUIDE- PILOT VALVE
*	9	O-B-008	4	O-RING
	10	MPH-2513	2	VALVE STEM- PILOT VALVE
	11	MPH-2511-01	2	STEM SEAL ASSY- PILOT VALVE
	12	MPH-2541	2	SPRING HOUSING- PILOT VALVE
	13	PAT-PH-3203	1	CYLINDER - Ø3-1/4x 2" STROKE
*	14	O-B-152	2	O-RING
	15	PAT-PH-3206	3	TIE ROD
	16	PAT-PH-3212	1	UPPER END CAP
	17	VPH-4254	2	BUSHING- 7/8 DIA. PISTON ROD
*	18	O-B-118	2	O-RING
*	19	O-B-121	2	O-RING
	20	MPH-3261	2	SNAP RING - EXTERNAL
	21	F-HN-05F	6	HEX NUT
	22	PAT-PH-5009	1	LOWER ROD
	23	PAT-PH-5008	1	UPPER ROD ASSY
	24	MPH-3251	1	PISTON - 3-1/4" POWER HEAD
	25	PAT-PH-5011	4	TIE ROD
	26	F-HB-06C-24-GR8	4	HEX BOLT
	27	F-HB-05C-12	2	HEX BOLT
	28	PAT-PH-3201	1	UPPER VALVE BLOCK
	29	PAT-PH-3202	1	LOWER VALVE BLOCK
	30	PAT-PH-3205	1	VALVE ROD POPPET
	31	MPH-2517	2	VALVE PISTON
*	32	O-U-204-90	2	O-RING
*	33	O-B-116	2	O-RING
*	34	O-D-010-90	2	O-RING
	35	MPH-3262	2	PISTON STOP
*	36	O-B-020	3	O-RING
	37	F-HB-04C-08	2	HEX BOLT
*	38	O-B-013	2	O-RING
	40	F-SS-832-02-SS	4	SS SET SCREW
	41	F-CS-04C-32-SS	4	CAP SCREW
*	42	MPH-2529	2	DIAPHRAGM
	43	MPH-2522	2	VALVE EXHAUST PORT
	44	F-CS-1024-06-SS	4	CAP SCREW
	45	MPH-2521	2	VALVE END CAP
*	46	O-B-019	2	O-RING
	47	07223	1	MALE CONNECTOR
*	48	O-B-404	2	O-RING
*	49	O-B-336	1	O-RING
	50	MPH-2539	2	MALE ELBOW
	51	MPH-2538	1	MALE POLY TEE FITTING

MAGNUM VENUS PRODUCTS

3.25" POWER HEAD

PAT-PH-3250-INV2

PAT- PH-3250 PARTS LIST			
ITEM	PART NUMBER	QTY	DESCRIPTION
52	MS-2052-1	.40 FT	TUBING
53	PAT-PH-3210-01	1	MUFFLER ASSEMBLY
54	MPH-2546-01	1	RESET STEM ASSEMBLY
55	PF-ST-02-BR	1	TEE FITTING
56	MPH-2545	1	SEAL
57	F-SW-06	4	LOCK WASHER
58	F-HB-04C-56-SS	2	HEX BOLT
59	F-SW-04-SS	2	LOCK WASHER
60	07236	1	MALE ELBOW
61	F-FW-04	2	FLAT WASHER

*ASTERISKS DENOTE PARTS INCLUDED IN PAT-PH-3250-SK SEAL KIT

OPTIONAL PARTS AND ASSEMBLIES

PART No.	QTY.	DESCRIPTION
MPH-2542	1	RESET BUTTON ASSEMBLY
PAT-PH-SB	1	SHIFT BLOCK ASSEMBLY

MAGNUM VENUS PRODUCTS

3.25" POWER HEAD

PAT-PH-3250-INV2