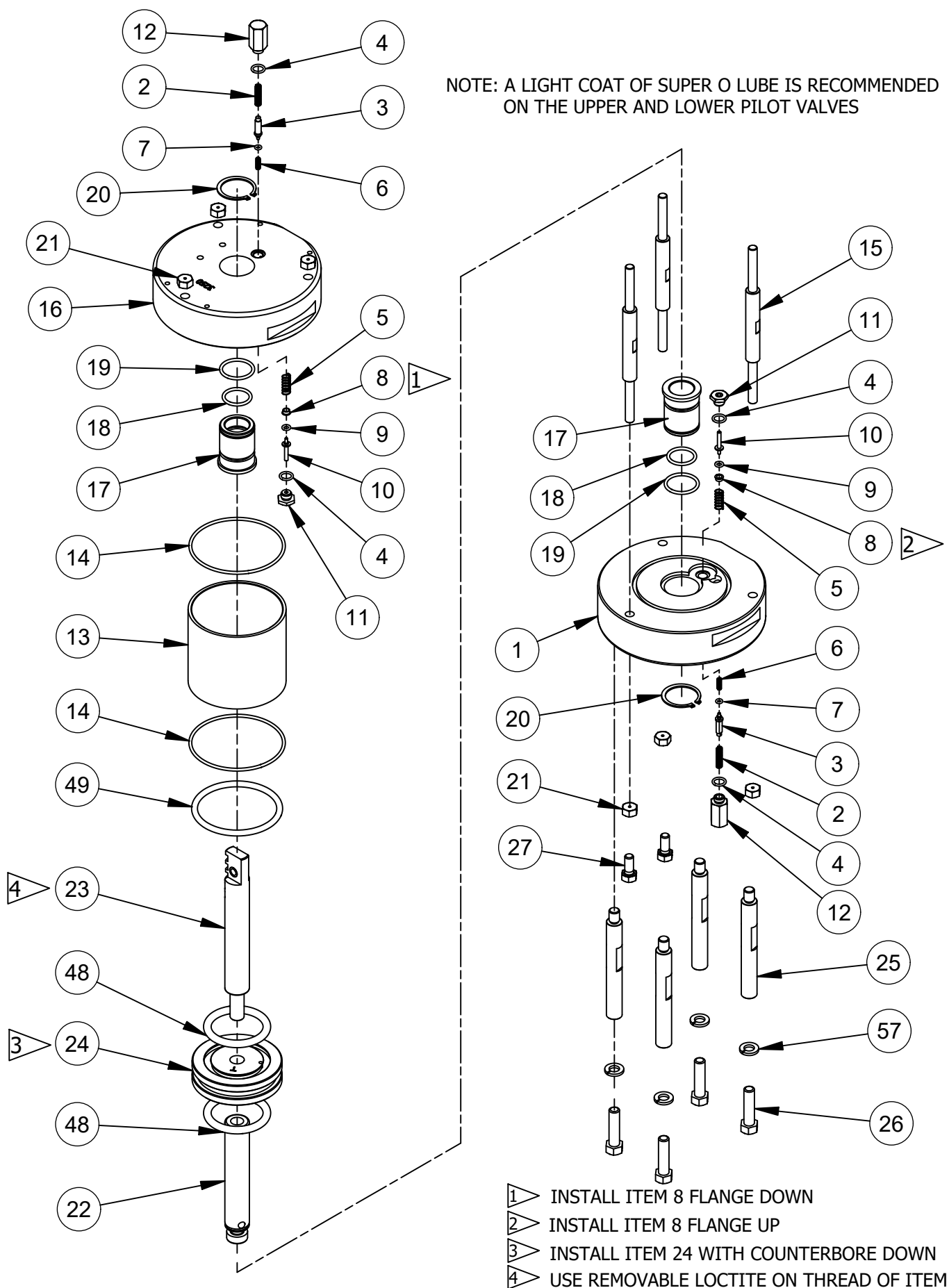


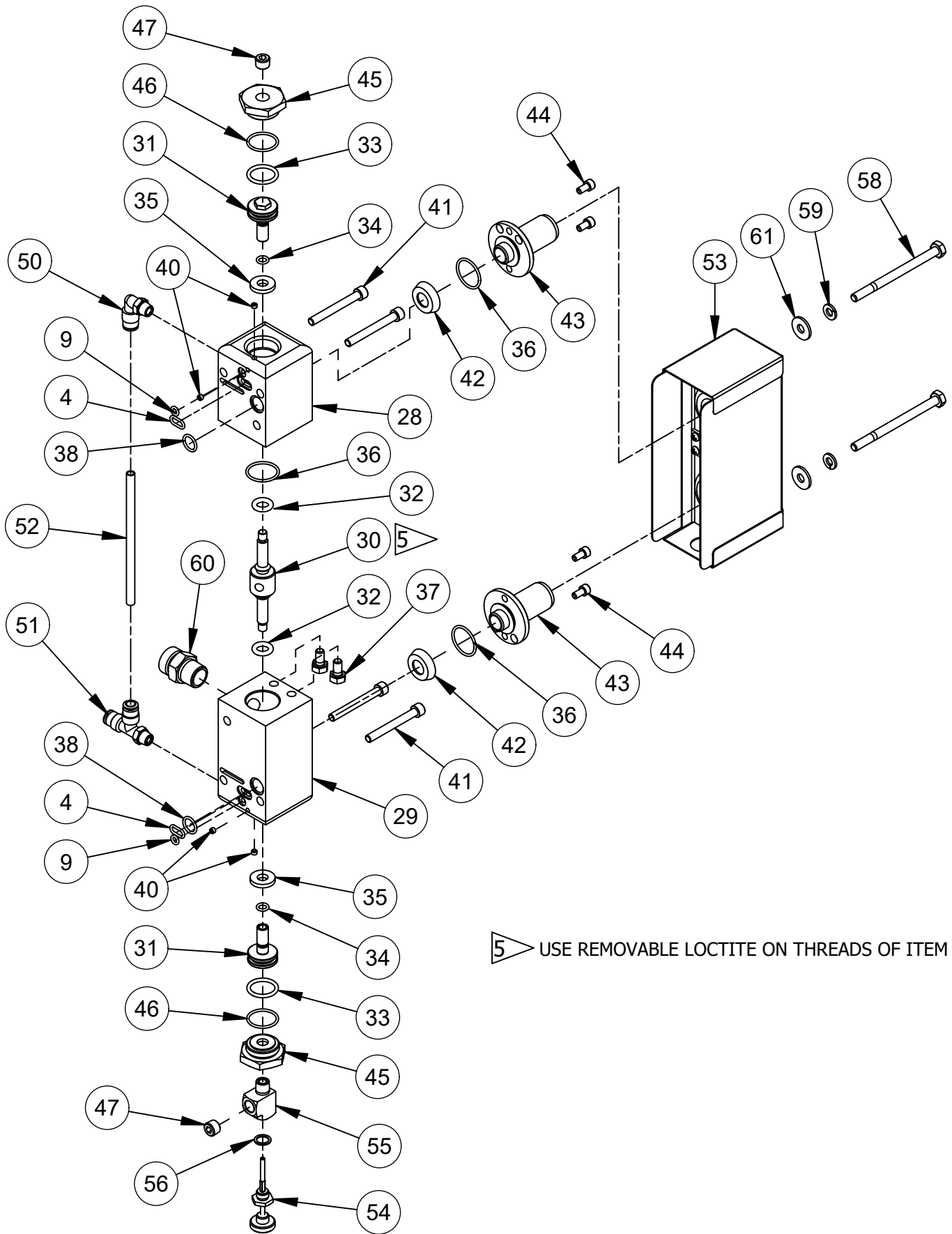
NOTE: A LIGHT COAT OF SUPER O LUBE IS RECOMMENDED ON THE UPPER AND LOWER PILOT VALVES



MAGNUM VENUS PRODUCTS

3.25" POWER HEAD

PAT-PH-3250



5 USE REMOVABLE LOCTITE ON THREADS OF ITEM 30

MAGNUM VENUS PRODUCTS

3.25" POWER HEAD	PAT-PH-3250
------------------	-------------

PAT- PH-3250 PARTS LIST

ITEM	PART NUMBER	QTY	DESCRIPTION
1	PAT-PH-3204	1	LOWER END CAP
2	MPH-2533	2	COMPRESSION SPRING
3	MPH-2540	2	INLET ROD- PILOT VALVE
* 4	O-B-012	6	O-RING
5	MPH-2528	2	SPRING
6	MPH-2526	2	SPRING
* 7	O-U-006	2	O-RING
8	MPH-2512	2	SEAL GUIDE- PILOT VALVE
* 9	O-B-008	4	O-RING
10	MPH-2513	2	VALVE STEM- PILOT VALVE
11	MPH-2511-01	2	STEM SEAL ASSY- PILOT VALVE
12	MPH-2541	2	SPRING HOUSING- PILOT VALVE
13	PAT-PH-3203	1	CYLINDER - Ø3-1/4x 2" STROKE
* 14	O-B-152	2	O-RING
16	PAT-PH-3212	1	UPPER END CAP
17	VPH-4254	2	BUSHING- 7/8 DIA. PISTON ROD
* 18	O-B-118	2	O-RING
* 19	O-B-121	2	O-RING
20	MPH-3261	2	SNAP RING - EXTERNAL
21	F-HN-05F	6	HEX NUT - Inch
22	PAT-PH-5009	1	LOWER ROD
23	PAT-PH-5008	1	UPPER ROD ASSY
24	MPH-3251	1	PISTON - 3-1/4" POWER HEAD
25	PAT-PH-5011	4	TIE ROD
26	F-HB-06C-24-GR8	4	HEX BOLT
27	F-HB-05C-12	2	HEX BOLT - Inch
28	PAT-PH-3201	1	UPPER VALVE BLOCK
29	PAT-PH-3202	1	LOWER VALVE BLOCK
30	PAT-PH-3205	1	VALVE ROD POPPET
31	MPH-2517	2	VALVE PISTON
* 32	O-U-204-90	2	O-RING
* 33	O-B-116	2	O-RING
* 34	O-D-010-90	2	O-RING
35	MPH-3262	2	PISTON STOP
* 36	O-B-020	3	O-RING
37	F-HB-04C-08	2	HEX BOLT - Inch
* 38	O-B-013	2	O-RING
40	F-SS-832-02-SS	4	SS SET SCREW
41	F-CS-04C-32-SS	4	CAP SCREW
* 42	MPH-2529	2	DIAPHRAGM
43	MPH-2522	2	VALVE EXHAUST PORT
44	F-CS-1024-06-SS	4	CAP SCREW
45	MPH-2521	2	VALVE END CAP
* 46	O-B-019	2	O-RING
47	PF-AP-02-SS	2	PIPE PLUG
* 48	O-B-404	2	O-RING
* 49	O-B-336	1	O-RING
50	MPH-2539	1	MALE ELBOW
51	MPH-2538	1	MALE POLY TEE FITTING

MAGNUM VENUS PRODUCTS

3.25" POWER HEAD

PAT-PH-3250

PAT- PH-3250 PARTS LIST			
ITEM	PART NUMBER	QTY	DESCRIPTION
52	MS-2052-1	.40 FT	TUBING
53	PAT-PH-3210-01	1	MUFFLER ASSEMBLY
54	MPH-2546-01	1	RESET STEM ASSEMBLY
55	PF-ST-02-BR	1	TEE FITTING
56	MPH-2545	1	SEAL
57	F-SW-06	4	LOCK WASHER
58	F-HB-04C-56-SS	2	HEX BOLT
59	F-SW-04-SS	2	LOCK WASHER
60	PF-HN-06-08S	1	HOSE ADAPTER
61	F-FW-04	2	FLAT WASHER

*ASTERISKS DENOTE PARTS INCLUDED IN PAT-PH-3250-SK SEAL KIT

OPTIONAL PARTS AND ASSEMBLIES

PART No.	QTY.	DESCRIPTION
MPH-2542	1	RESET BUTTON ASSEMBLY
PAT-PH-SB	1	SHIFT BLOCK ASSEMBLY

MAGNUM VENUS PRODUCTS

3.25" POWER HEAD

PAT-PH-3250