
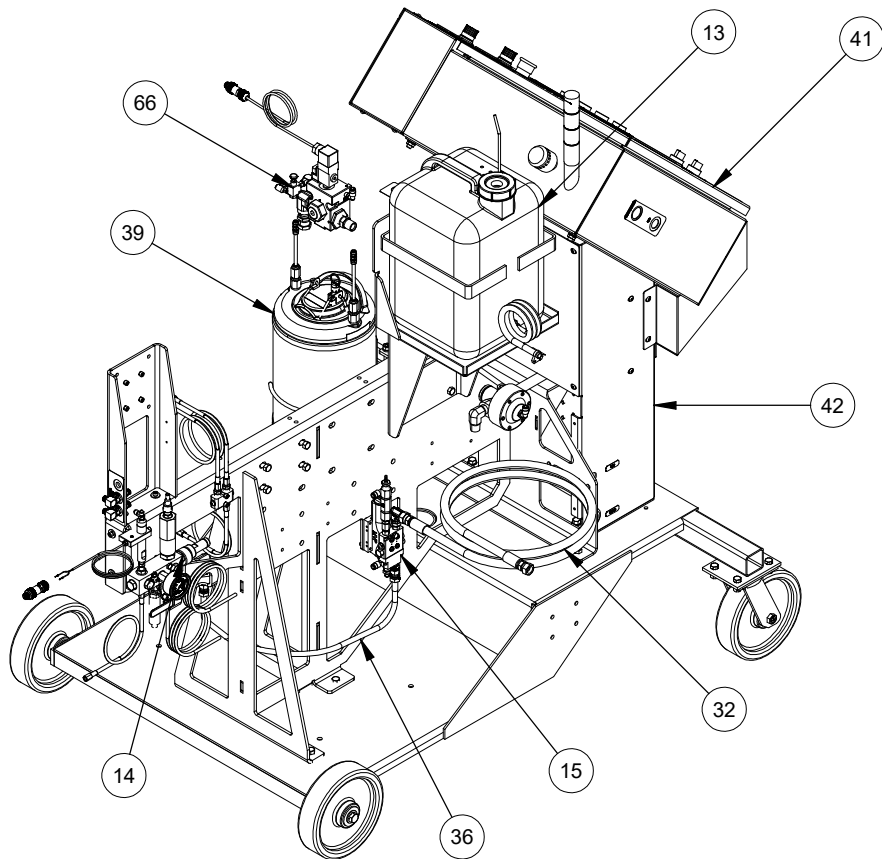


| REVISION HISTORY | | | |
|------------------|-----------------|------|----------|
| REV | DESCRIPTION | DATE | APPROVED |
| - | INITIAL RELEASE | | |

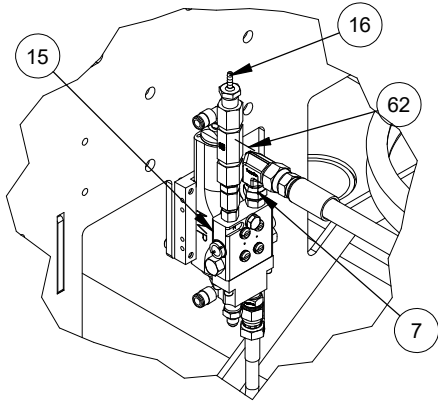
| | | | | | | | | | | | | |
|---|--|-----------------------------|----------------------------|------------|------------|-------------|-------------|---------|----------------|---------------|--|--|
|  <p>MVP MAGNUM VENUS PRODUCTS</p> <p>CORPORATE HEADQUARTERS TECHNOLOGY CENTER 10535 Hardin Valley Road Knoxville, TN 37932 865.686.5670</p> <p>1862 Ives Avenue Kent, WA 98032 253.854.2660</p> <p>***CONFIDENTIAL*** This document contains proprietary information that is the sole property of MVP. Distribution, reproduction, disclosure or use by others, in part or in whole, is not permitted without prior written permission of MVP and all rights herein reserved.</p> | <p>TOLERANCES UNLESS OTHERWISE SPECIFIED ALL DIMENSIONS ARE IN INCHES</p> <table border="0"> <tr> <td>DECIMALS</td> <td>FRACTIONS</td> </tr> <tr> <td>.XX ± 0.10</td> <td>XX" ± 1/32"</td> </tr> <tr> <td>.XXX ± .003</td> <td>ANGULAR</td> </tr> <tr> <td>TIR ± .005</td> <td>XX° ± 1/2°</td> </tr> </table> | | DECIMALS | FRACTIONS | .XX ± 0.10 | XX" ± 1/32" | .XXX ± .003 | ANGULAR | TIR ± .005 | XX° ± 1/2° | <p>SPECIFICATION ASSEMBLY</p> | |
| | DECIMALS | FRACTIONS | | | | | | | | | | |
| | .XX ± 0.10 | XX" ± 1/32" | | | | | | | | | | |
| | .XXX ± .003 | ANGULAR | | | | | | | | | | |
| TIR ± .005 | XX° ± 1/2° | | | | | | | | | | | |
| <p>*DO NOT SCALE DRAWING* ALL DIMENSIONS APPLY AFTER FINISH BREAK SHARP EDGES .005 MAX RADII .005 X 45° MAX CHAMFER</p> | <p>DESIGNED BJS</p> | <p>DRAWN BSTAPLETON</p> | <p>DATE 12/12/2016</p> | | | | | | | | | |
| | <p>DESCRIPTION INNOVATOR CONTROL PACKAGE 10" HMI</p> | | | | | | | | | | | |
| <table border="1"> <tr> <td>NEXT</td> <td>FINAL</td> <td>NEXT ASSY</td> <td>FINAL ASSY</td> </tr> <tr> <td> </td> <td> </td> <td> </td> <td> </td> </tr> </table> | NEXT | FINAL | NEXT ASSY | FINAL ASSY | | | | | <p>PROJECT</p> | <p>DWG NO</p> | <p>SHEET 1 OF 5</p> | |
| NEXT | FINAL | NEXT ASSY | FINAL ASSY | | | | | | | | | |
| | | | | | | | | | | | | |
| <p>QTY PER ASSY</p> | <p>WHERE USED</p> | <p>INV3-2000-4</p> | <p>REV -</p> | | | | | | | | | |



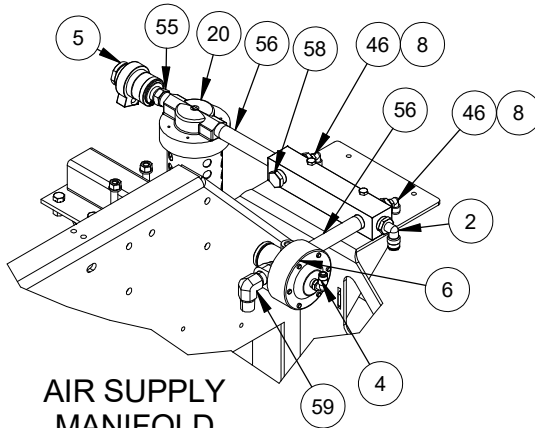
| | | | |
|-----|------|------------------|---|
| 1 | 66 | SV-02 | 24VDC SAFETY VALVE ASSEMBLY 3/2 .500 INCH |
| 1 | 61 | PF-SE-08 | 1/2 NPT STREET EBOW |
| 2 | 60 | PF-ME-08-08J | MALE ELBOW |
| 1 | 57 | PF-HN-08S-06J | HEX NIPPLE |
| 1 | 54 | PF-AP-08 | ALLEN PLUG 1/2 NPT |
| 1 | 53 | PF-AP-06 | ALLEN PLUG |
| 1 | 52 | PF-AP-04 | ALLEN PLUG |
| 1 | 51 | PAT-FM-1001 | FLUID MANIFOLD |
| 4 | 49 | MVP-1020 | QD COMPRESSION ELBOW |
| 1 | 42 | INV3-PLAT-2000-1 | INV3 PLATFORM |
| 1 | 41 | INV3-CB-100-10T | INV3 CONTROLLER 6" HMI |
| 1 | 37 | HCSS-088J8J-2.3 | BRAIDED STAINLESS HOSE ASSEMBLY |
| 1 | 36 | HCSS-066J6J-3 | SS BRAIDED HOSE |
| 1 | 32 | HAW-0666-10 | HOSE ASSEMBLY |
| 4 | 30 | F-SW-06 | LOCK WASHER |
| 4 | 28 | F-HN-06C | HEX NUT |
| 4 | 26 | F-HB-06C-16 | HEX BOLT |
| 4 | 24 | F-FW-06 | FLAT WASHER |
| 2 | 23 | F-CS-04C-36 | HEX SOCKET CAP SCREW - Inch |
| 1 | 18 | E-ECB-101 | ETHERNET BULKEHEAD |
| 1 | 17 | E-EC-101 | 84" ETHERNET CABLE |
| 1 | 14 | CM-10000 | CATALYST MANIFOLD INNOVATOR PLUS |
| 1 | 13 | CJ-5000-INV | CATALYST JUG |
| QTY | ITEM | PART NUMBER | DESCRIPTION |

Parts List

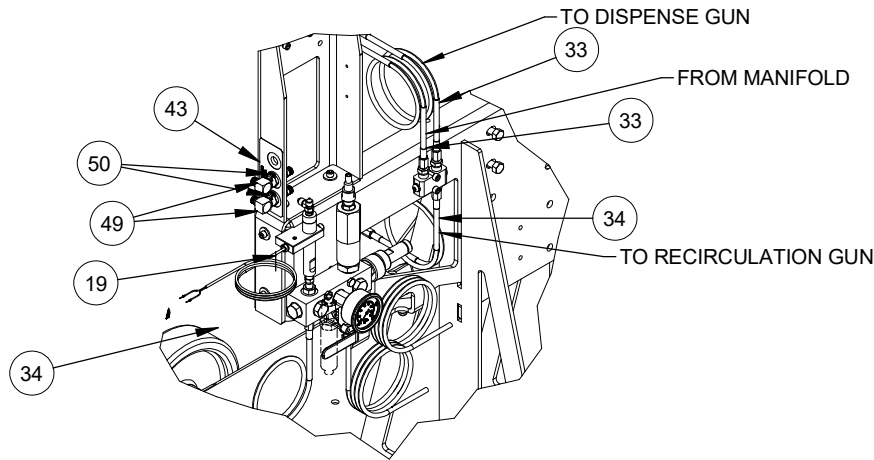
| | | | | | |
|--|--|--|---------------------|--|--|
| <p>MVP MAGNUM VENUS PRODUCTS CORPORATE HEADQUARTERS TECHNOLOGY CENTER 10535 Hardin Valley Road Knoxville, TN 37932 865.686.5670</p> <p>1862 Ives Avenue Kent, WA 98032 253.854.2660</p> <p>***CONFIDENTIAL*** This document contains proprietary information that is the sole property of MVP. Distribution, reproduction, disclosure or use by others, in part or in whole, is not permitted without prior written permission of MVP and all rights herein reserved.</p> | | <p>TOLERANCES UNLESS OTHERWISE SPECIFIED ALL DIMENSIONS ARE IN INCHES</p> <p>DECIMALS FRACTIONS XX ± 0.10 1/25" .XXX ± .003 ANGLULAR TIR ± .005 XX" ± 1/2"</p> | | <p>SPECIFICATION ASSEMBLY</p> | |
| | | DESIGNED BJS | DRAWN BSTAPLETON | DATE 12/12/2016 | |
| <p>*DO NOT SCALE DRAWING* ALL DIMENSIONS APPLY AFTER FINISH BREAK SHARP EDGES .005 MAX RADII .005 X 45° MAX CHAMFER</p> | | <p>DESCRIPTION INNOVATOR CONTROL PACKAGE 10" HMI</p> | | | |
| <p>PROJECT</p> | | <p>PROJECT</p> | | | |
| <p>NEXT FINAL NEXT ASSY FINAL ASSY</p> | | <p>DWG NO</p> | | | |
| <p>QTY PER ASSY</p> | | <p>WHERE USED</p> | | | |
| | | <p>INV3-2000-4</p> | | | |
| | | <p>SHEET 2 OF 5</p> | | | |
| | | <p>REV -</p> | | | |



RECIRCULATION HEAD



AIR SUPPLY MANIFOLD



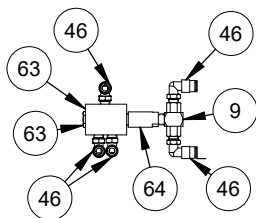
CATALYST MANIFOLD

| | | | |
|-----|------|-------------------|---------------------------------|
| 1 | 62 | PF-SE-SW-06M-04F | |
| 1 | 61 | PF-SE-08 | 1/2 NPT STREET EBOW |
| 2 | 60 | PF-ME-08-08J | MALE ELBOW |
| 1 | 59 | PF-ME-08 | MALE ELBOW |
| 1 | 58 | PF-HP-08 | HEX PLUG |
| 1 | 57 | PF-HN-08S-06J | HEX NIPPLE |
| 2 | 56 | PF-HN-08LL | HEX NIPPLE |
| 1 | 55 | PF-HN-08 | HEX NIPPLE |
| 1 | 54 | PF-AP-08 | ALLEN PLUG 1/2 NPT |
| 1 | 53 | PF-AP-06 | ALLEN PLUG |
| 1 | 52 | PF-AP-04 | ALLEN PLUG |
| 1 | 51 | PAT-FM-1001 | FLUID MANIFOLD |
| 4 | 50 | MVP-1023 | QD PANEL MOUNT SOCKET |
| 4 | 49 | MVP-1020 | QD COMPRESSION ELBOW |
| 9 | 46 | MPH-2539 | MALE ELBOW |
| 1 | 43 | INV3-PLAT-DECAL-1 | SPRUE DECAL |
| 1 | 38 | HCSS-088J8J-4 | BRAIDED STAINLESS HOSE ASSEMBLY |
| 1 | 37 | HCSS-088J8J-2.3 | BRAIDED STAINLESS HOSE ASSEMBLY |
| 1 | 36 | HCSS-066J6J-3 | SS BRAIDED HOSE |
| 2 | 34 | HCSS-0203J-3 | BRAIDED HOSE ASSY |
| 2 | 33 | HCSS-0203J-2 | BRAIDED HOSE ASSY |
| 4 | 30 | F-SW-06 | LOCK WASHER |
| 4 | 28 | F-HN-06C | HEX NUT |
| 4 | 26 | F-HB-06C-16 | HEX BOLT |
| 4 | 24 | F-FW-06 | FLAT WASHER |
| 2 | 23 | F-CS-04C-36 | HEX SOCKET CAP SCREW - Inch |
| 1 | 20 | EPX-AF-101 | .500 WATER TRAP |
| 1 | 19 | ECA-SENS-100 | SENSOR ASSEMBLY |
| 1 | 18 | E-ECB-101 | ETHERNET BULKEHEAD |
| 1 | 17 | E-EC-101 | 84" ETHERNET CABLE |
| 1 | 16 | CPRV-1002-A | CPRV HOSE FITTING |
| 1 | 15 | CPD-4000-A-EPX | EPX AUTOMATIC RECIRCULATION GUN |
| 2 | 8 | 7701-3-34 | REDUCER BUSHING |
| 1 | 7 | 5104-9-1 | RESIN FITTING |
| 1 | 6 | 08609 | PILOTED REGULATOR |
| 1 | 5 | 07327 | SLIDE VALVE |
| 1 | 4 | 07233 | MALE POLY ELBOW |
| 1 | 2 | 06559 | MALE ELBOW |
| QTY | ITEM | PART NUMBER | DESCRIPTION |

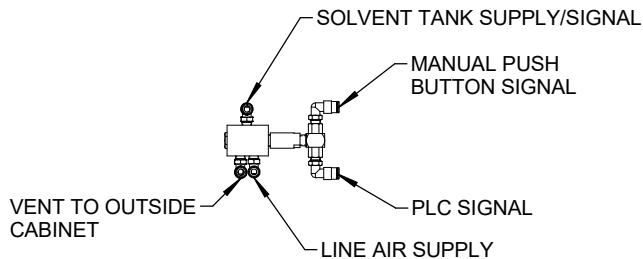
Parts List

| | | | | | |
|---|--|--|---------------------|--|--|
| <p>MVP MAGNUM VENUS PRODUCTS</p> <p>CORPORATE HEADQUARTERS TECHNOLOGY CENTER 10535 Hardin Valley Road Knoxville, TN 37932 865.686.5670</p> <p>1862 Ives Avenue Kent, WA 98032 253.854.2660</p> | | <p>TOLERANCES UNLESS OTHERWISE SPECIFIED ALL DIMENSIONS ARE IN INCHES</p> <p>DECIMALS: .XX ± .010 .XXX ± .003 TIR ± .005</p> <p>FRACTIONS: 1/25 ANGULAR: XX' ± 1/2"</p> | | <p>SPECIFICATION ASSEMBLY</p> | |
| | | DESIGNED BJS | DRAWN BSTAPLETON | DATE 12/12/2016 | |
| <p>DESCRIPTION INNOVATOR CONTROL PACKAGE 10" HMI</p> | | | | | |
| <p>PROJECT</p> | | | | | |
| <p>DWG NO</p> | | | | | |
| <p>QTY PER ASSY</p> | | <p>WHERE USED</p> | | | |
| | | <p>INV3-2000-4</p> | | | |
| | | <p>SHEET 3 OF 5</p> | | | |
| | | <p>REV -</p> | | | |

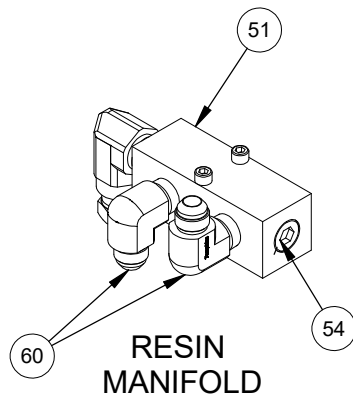
CONFIDENTIAL
This document contains proprietary information that is the sole property of MVP. Distribution, reproduction, disclosure or use by others, in part or in whole, is not permitted without prior written permission of MVP and all rights herein reserved.



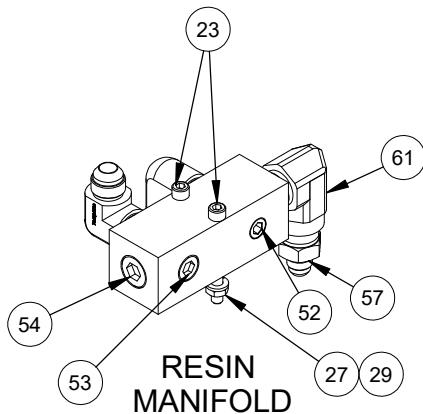
SOLVENT SAFETY VALVE



AIR CIRCUIT REF.



RESIN MANIFOLD



RESIN MANIFOLD


| | | | |
|-----|------|-----------------|---------------------------------|
| 1 | 64 | PNE-APA-101 | AIR PILOT ACTUATOR |
| 1 | 63 | PNE-3W-104 | 3-WAY CARTRIDGE VALVE |
| 1 | 61 | PF-SE-08 | 1/2 NPT STREET EBOW |
| 2 | 60 | PF-ME-08-08J | MALE ELBOW |
| 1 | 57 | PF-HN-08S-06J | HEX NIPPLE |
| 1 | 54 | PF-AP-08 | ALLEN PLUG 1/2 NPT |
| 1 | 53 | PF-AP-06 | ALLEN PLUG |
| 1 | 52 | PF-AP-04 | ALLEN PLUG |
| 1 | 51 | PAT-FM-1001 | FLUID MANIFOLD |
| 4 | 49 | MVP-1020 | QD COMPRESSION ELBOW |
| 9 | 46 | MPH-2539 | MALE ELBOW |
| 1 | 37 | HCSS-088J8J-2.3 | BRAIDED STAINLESS HOSE ASSEMBLY |
| 1 | 36 | HCSS-066J6J-3 | SS BRAIDED HOSE |
| 4 | 30 | F-SW-06 | LOCK WASHER |
| 4 | 28 | F-HN-06C | HEX NUT |
| 4 | 26 | F-HB-06C-16 | HEX BOLT |
| 4 | 24 | F-FW-06 | FLAT WASHER |
| 2 | 23 | F-CS-04C-36 | HEX SOCKET CAP SCREW - Inch |
| 1 | 18 | E-ECB-101 | ETHERNET BULKEHEAD |
| 1 | 17 | E-EC-101 | 84" ETHERNET CABLE |
| 1 | 9 | 8407-3-1 | SHUTTLE VALVE |
| QTY | ITEM | PART NUMBER | DESCRIPTION |

Parts List

| | | | | | |
|--|--|--|--|--------------------------------------|---------------------|
| | | TOLERANCES UNLESS OTHERWISE SPECIFIED ALL DIMENSIONS ARE IN INCHES | | SPECIFICATION ASSEMBLY | |
| | | DECIMALS .XX ± 0.10 .XXX ± .003 TIR ± .005 | FRACTIONS 1/25 ANGULAR XX' ± 1/2" | DESIGNED BJS | DRAWN BSTAPLETON |
| ***CONFIDENTIAL*** This document contains proprietary information that is the sole property of MVP. Distribution, reproduction, disclosure or use by others, in part or in whole, is not permitted without prior written permission of MVP and all rights herein reserved. | | "DO NOT SCALE DRAWING" ALL DIMENSIONS APPLY AFTER FINISH BREAK SHARP EDGES .005 MAX RADII .005 X 45° MAX CHAMFER | | INNOVATOR CONTROL PACKAGE 10" HMI | |
| PROJECT DWG NO | | PROJECT DWG NO | | SHEET 4 OF 5 | |
| QTY PER ASSY | | WHERE USED | | INV3-2000-4 | |

| Parts List | | | |
|------------|------|-------------------|----------------------------------|
| QTY | ITEM | PART NUMBER | DESCRIPTION |
| 5 | 1 | 01443 | .250" YELLOW POLY |
| 1 | 2 | 06559 | MALE ELBOW |
| 5 | 3 | 06946 | Y UNION |
| 1 | 4 | 07233 | MALE POLY ELBOW |
| 1 | 5 | 07327 | SLIDE VALVE |
| 1 | 6 | 08609 | PILOTED REGULATOR |
| 1 | 7 | 5104-9-1 | RESIN FITTING |
| 2 | 8 | 7701-3-34 | REDUCER BUSHING |
| 1 | 9 | 8407-3-1 | SHUTTLE VALVE |
| 1 | 10 | 8407-4-1 | 3-WAY VALVE |
| 1 | 11 | 8407-5-1 | PUSH BUTTON |
| 1 | 12 | ASSY-0423-2 | INNOVATOR MPG BLOCK |
| 1 | 13 | CJ-5000-INV | CATALYST JUG |
| 1 | 14 | CM-10000 | CATAYLST MANIFOLD INNOVATOR PLUS |
| 1 | 15 | CPD-4000-A-EPX | EPX AUTOMATIC RECIRCULATION GUN |
| 1 | 16 | CPRV-1002-A | CPRV HOSE FITTING |
| 1 | 17 | E-EC-101 | 84" ETHERNET CABLE |
| 1 | 18 | E-ECB-101 | ETHERNET BULKEHEAD |
| 1 | 19 | ECA-SENS-100 | SENSOR ASSEMBLY |
| 1 | 20 | EPX-AF-101 | .500 WATER TRAP |
| 8 | 21 | F-CS-04C-12 | CAP SCREW |
| 2 | 22 | F-CS-04C-24 | CAP SCREW |
| 2 | 23 | F-CS-04C-36 | HEX SOCKET CAP SCREW - Inch |
| 4 | 24 | F-FW-06 | FLAT WASHER |
| 2 | 25 | F-HB-04C-32 | HEX BOLT |
| 4 | 26 | F-HB-06C-16 | HEX BOLT |
| 10 | 27 | F-HN-04C | HEX NUT |
| 4 | 28 | F-HN-06C | HEX NUT |
| 14 | 29 | F-SW-04 | LOCK WASHER |
| 4 | 30 | F-SW-06 | LOCK WASHER |
| 1 | 31 | HA-0888-3 | AIR HOSE ASSEMBLY |
| 1 | 32 | HAW-0666-10 | HOSE ASSEMBLY |
| 2 | 33 | HCSS-0203J-2 | BRAIDED HOSE ASSY |
| 2 | 34 | HCSS-0203J-3 | BRAIDED HOSE ASSY |
| 1 | 35 | HCSS-0606J-3 | BRAIDED HOSE ASSEMBLY |
| 1 | 36 | HCSS-066J6J-3 | SS BRAIDED HOSE |
| 1 | 37 | HCSS-088J8J-2.3 | BRAIDED STAINLESS HOSE ASSEMBLY |
| 1 | 38 | HCSS-088J8J-4 | BRAIDED STAINLESS HOSE ASSEMBLY |
| 1 | 39 | INV-SP4-2000 | INNOVATOR FLUSH TANK ASSEMBLY |
| 1 | 40 | INV3-2000-DECAL-X | INV3-1000/2000-X DECAL SET |

| Parts List | | | |
|------------|------|-------------------|---|
| QTY | ITEM | PART NUMBER | DESCRIPTION |
| 1 | 41 | INV3-CB-100-10T | INV3 CONTROLLER 6" HMI |
| 1 | 42 | INV3-PLAT-2000-1 | INV3 PLATFORM |
| 1 | 43 | INV3-PLAT-DECAL-1 | SPRUE DECAL |
| 1 | 44 | MA-2001-1 | MANIFOLD BLOCK |
| 2 | 45 | MPH-2530 | GROMMET |
| 9 | 46 | MPH-2539 | MALE ELBOW |
| 5 | 47 | MPM-2583-1 | .375 NATURAL POLY |
| 100 | 48 | MS-2052-1 | .250" NATURAL POLY |
| 4 | 49 | MVP-1020 | QD COMPRESSION ELBOW |
| 4 | 50 | MVP-1023 | QD PANEL MOUNT SOCKET |
| 1 | 51 | PAT-FM-1001 | FLUID MANIFOLD |
| 1 | 52 | PF-AP-04 | ALLEN PLUG |
| 1 | 53 | PF-AP-06 | ALLEN PLUG |
| 1 | 54 | PF-AP-08 | ALLEN PLUG 1/2 NPT |
| 1 | 55 | PF-HN-08 | HEX NIPPLE |
| 2 | 56 | PF-HN-08LL | HEX NIPPLE |
| 1 | 57 | PF-HN-08S-06J | HEX NIPPLE |
| 1 | 58 | PF-HP-08 | HEX PLUG |
| 1 | 59 | PF-ME-08 | MALE ELBOW |
| 2 | 60 | PF-ME-08-08J | MALE ELBOW |
| 1 | 61 | PF-SE-08 | 1/2 NPT STREET EBOW |
| 1 | 62 | PF-SE-SW-06M-04F | |
| 1 | 63 | PNE-3W-104 | 3-WAY CARTRIDGE VALVE |
| 1 | 64 | PNE-APA-101 | AIR PILOT ACTUATOR |
| 1 | 65 | PRTM-RB-2-MEKP | CATALYST RECIRCULATION BLOCK 3J3J3J |
| 1 | 66 | SV-02 | 24VDC SAFETY VALVE ASSEMBLY 3/2 .500 INCH |

| | | | | | | | | | | | | | | | | | | |
|--|--|---------------------|----------|------------|------------|------------|-------------|---------|------------|------------|--|--|----------|-------|------|-----|------------|------------|
|  <p>MVP MAGNUM VENUS PRODUCTS</p> <p>CORPORATE HEADQUARTERS TECHNOLOGY CENTER 10555 Hardin Valley Road Knoxville, TN 37932 865.686.5670</p> <p>1862 Ives Avenue Kent, WA 98032 253.854.2660</p> <p>***CONFIDENTIAL*** This document contains proprietary information that is the sole property of MVP. Distribution, reproduction, disclosure or use by others, in part or in whole, is not permitted without prior written permission of MVP and all rights herein reserved.</p> | <p>TOLERANCES UNLESS OTHERWISE SPECIFIED ALL DIMENSIONS ARE IN INCHES</p> <table border="0"> <tr> <td>DECIMALS</td> <td>FRACTIONS</td> </tr> <tr> <td>.XX ± 0.10</td> <td>1/25"</td> </tr> <tr> <td>.XXX ± .003</td> <td>ANGULAR</td> </tr> <tr> <td>TIR ± .005</td> <td>XX' ± 1/2"</td> </tr> </table> | | DECIMALS | FRACTIONS | .XX ± 0.10 | 1/25" | .XXX ± .003 | ANGULAR | TIR ± .005 | XX' ± 1/2" | <p>SPECIFICATION ASSEMBLY</p> <table border="0"> <tr> <td>DESIGNED</td> <td>DRAWN</td> <td>DATE</td> </tr> <tr> <td>BJS</td> <td>BSTAPLETON</td> <td>12/12/2016</td> </tr> </table> | | DESIGNED | DRAWN | DATE | BJS | BSTAPLETON | 12/12/2016 |
| | DECIMALS | FRACTIONS | | | | | | | | | | | | | | | | |
| | .XX ± 0.10 | 1/25" | | | | | | | | | | | | | | | | |
| | .XXX ± .003 | ANGULAR | | | | | | | | | | | | | | | | |
| TIR ± .005 | XX' ± 1/2" | | | | | | | | | | | | | | | | | |
| DESIGNED | DRAWN | DATE | | | | | | | | | | | | | | | | |
| BJS | BSTAPLETON | 12/12/2016 | | | | | | | | | | | | | | | | |
| <p>*DO NOT SCALE DRAWING* ALL DIMENSIONS APPLY AFTER FINISH BREAK SHARP EDGES .005 MAX RADII .005 X 45° MAX CHAMFER</p> | | | | | | | | | | | | | | | | | | |
| <p>DESCRIPTION INNOVATOR CONTROL PACKAGE 10" HMI</p> | | | | | | | | | | | | | | | | | | |
| <p>PROJECT</p> <table border="0"> <tr> <td>NEXT FINAL</td> <td>NEXT ASSY</td> <td>FINAL ASSY</td> <td>REV</td> </tr> <tr> <td></td> <td></td> <td></td> <td></td> </tr> </table> | | | | NEXT FINAL | NEXT ASSY | FINAL ASSY | REV | | | | | | | | | | | |
| NEXT FINAL | NEXT ASSY | FINAL ASSY | REV | | | | | | | | | | | | | | | |
| | | | | | | | | | | | | | | | | | | |
| <p>QTY PER ASSY</p> | | <p>WHERE USED</p> | | | | | | | | | | | | | | | | |
| | | <p>INV3-2000-4</p> | | | | | | | | | | | | | | | | |
| | | <p>SHEET 5 OF 5</p> | | | | | | | | | | | | | | | | |