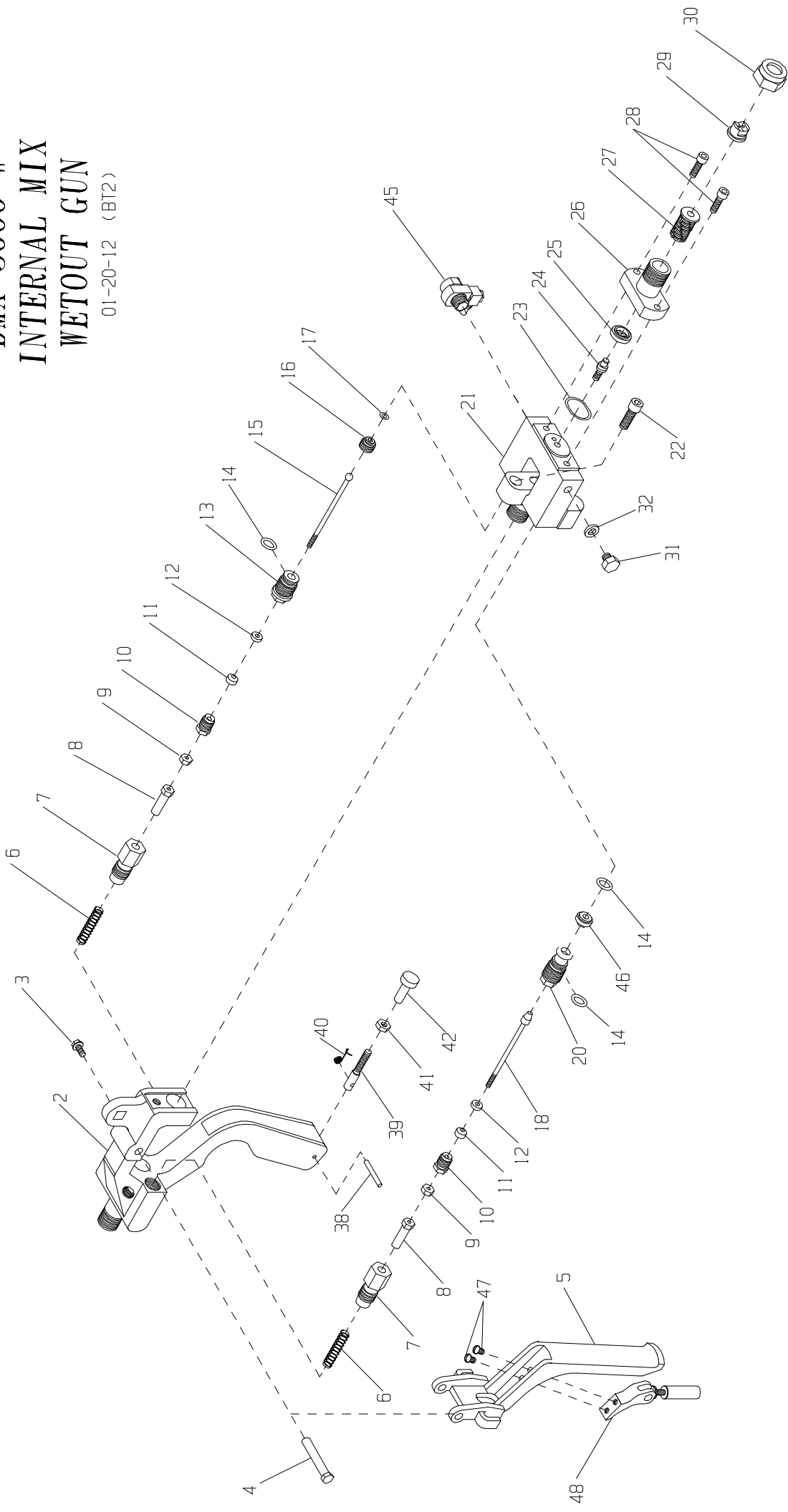


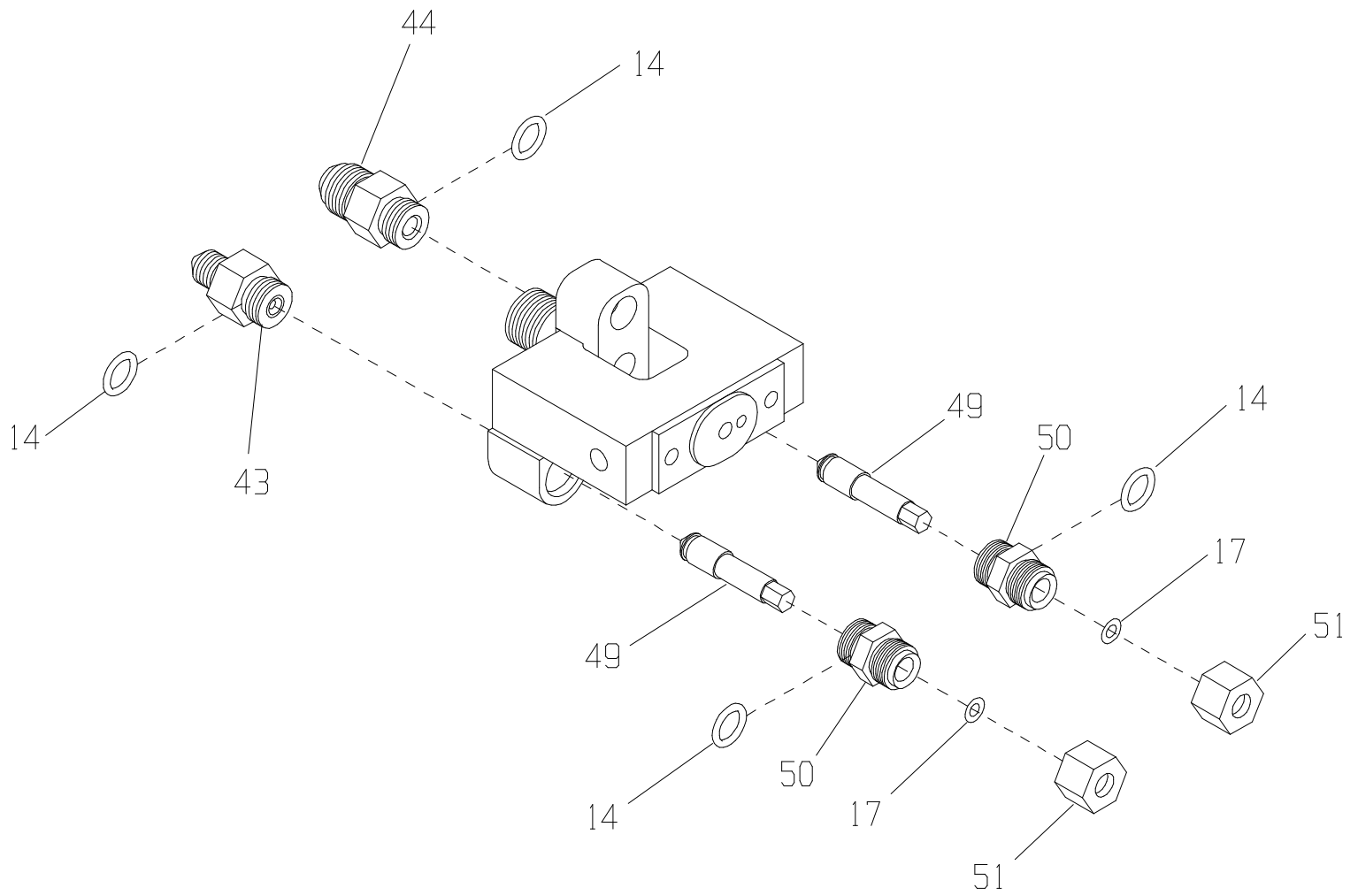
**DMX-3000-W
INTERNAL MIX
WETOUT GUN**

01-20-12 (BT2)



DMX-3000-W

PAGE 2



**DMX-3000-W
WETOUT GUN
01-20-12
PARTS KEY**

ITEM	PART #	DESCRIPTION	QTY	SEAL KIT SOLD SEPARATELY:
2	54350-3	GUN HANDLE	1	*DMX-3000-SK SEAL KIT
3	00145	SCREW	1	KIT ALSO INCLUDES 5104-13-1 INJECTOR
4	54630-1	STUD	1	SEAL FOR PART 24. 5104-03-01
5	MAX-2040	TRIGGER	1	
6	04039-1	SPRING	2	
7	54000-1	RETAINER	2	OPTIONAL EQUIPMENT:
8	53900-1	NEEDLE GUIDE	2	
9	53800-1	JAM NUT	2	MAX-2017-S STATIC MIXER HOUSING
10	MG-1022	PACKING NUT	2	
11*	MAX-2008	PACKING SEAL	2	VPG-1002 DIFFUSER/GASKET (PLACE BETWEEN TIP AND HOUSING)
12	MAX-2009	SEAL RETAINER	2	
13	MAX-2013	SEAL HOUSING	1	
14*	□-S-012	□-RING	7	VPG-1003 STATIC MIXER
15	MAX-2010-01	NEEDLE	1	
16	MAX-2011-01	CARBIDE SEAT	1	5104-07-01 BALL VALVE FLUSH
17*	□-T-010	□-RING	3	
18	DMX-3008-01	PISTON NEEDLE	1	DMX-3009-01 CATALYST HOUSING/SEAT ASSEMBLY - INCLUDES
20	DMX-3009-02	NEEDLE HOUSING (CAT.)	1	ITEM 14. □-S-012 (QTY. 2),
21	DMX-3001-01	GUN HEAD	1	ITEM 20. DMX-3009-02, AND
22	F-CS-04C-12	CAP SCREW	1	ITEM 46. CPR-2012-02
23*	□-S-018	□-RING	1	
24	5104-03-01	INJECTOR	1	
25	5104-18-1	DIFFUSER	1	04040-1 HEAVY SPRING TO REPLACE 04039-1
26	MAX-2017-T	MIXER HOUSING	1	
27*	5107-27-3	TURBULENT MIXER	1	
28	F-CS-1024-10	CAP SCREW	2	
29	VFIT-6025	FIT NOZZLE	1	
30	8704-4-1	NOZZLE CAP	1	
31	53110-1	PLUG	1	
32*	02441-1	SEAL	1	
38	02883-8	PIN	1	
39	56190-1	SCREW	1	
40	04420-1	SPRING	1	
41	F-HN-1024	NUT	1	
42	56100-1	NUT	1	
43	DMX-3006-01	CATALYST FITTING	1	
44	DMX-3005	MATERIAL FITTING	1	
45	5104-01-01	FLUSH VALVE	1	
46	CPR-2012-02	CATALYST SEAT	1	
47	F-MS-832-04	MACHINE SCREW	2	
48	CPR-2060-01	MOUNT	1	
49	DMX-3004	NEEDLE	2	
50	DMX-3003	NEEDLE HOUSING	2	
51	DMX-3002	PACKING NUT	2	