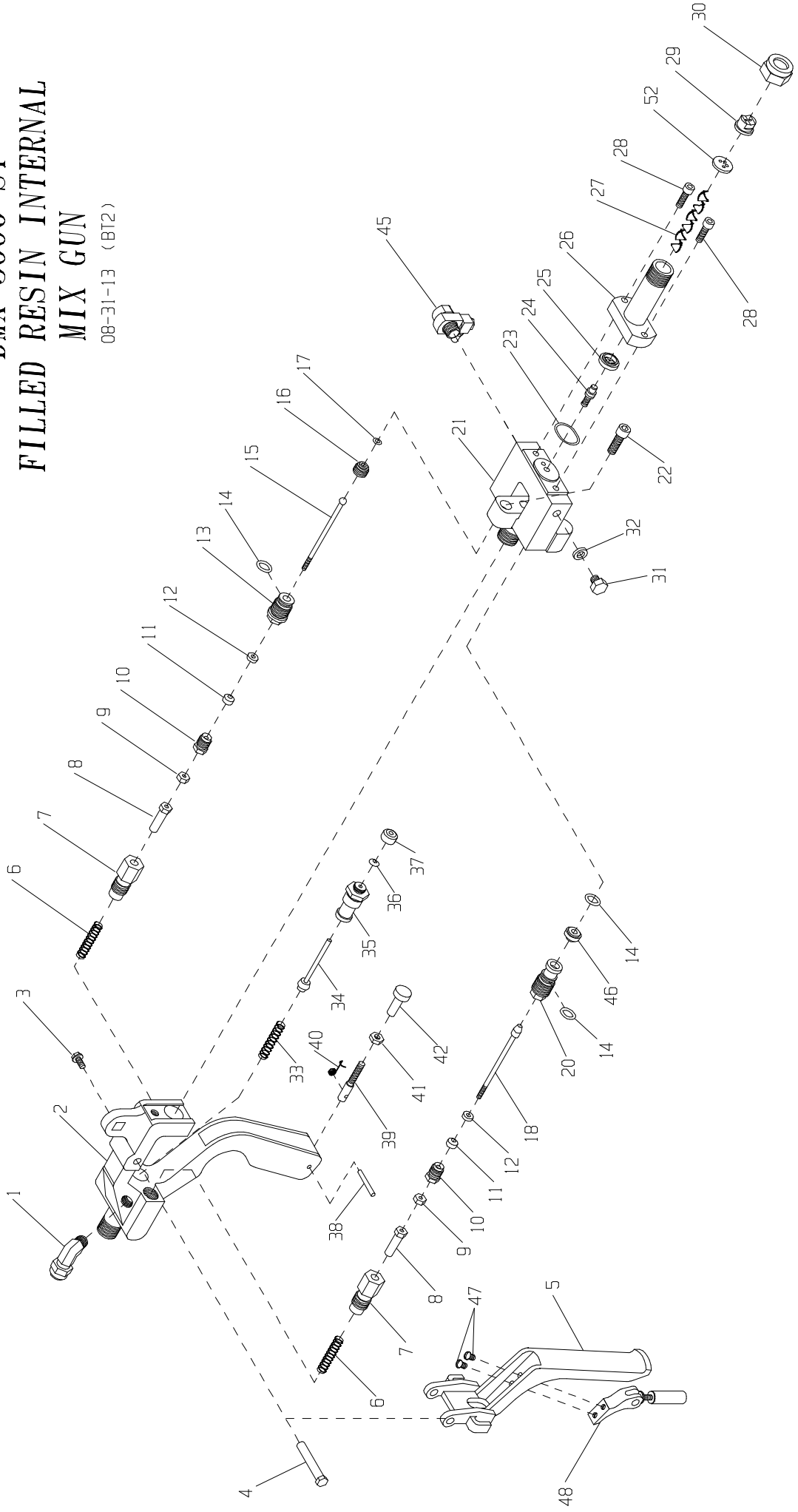


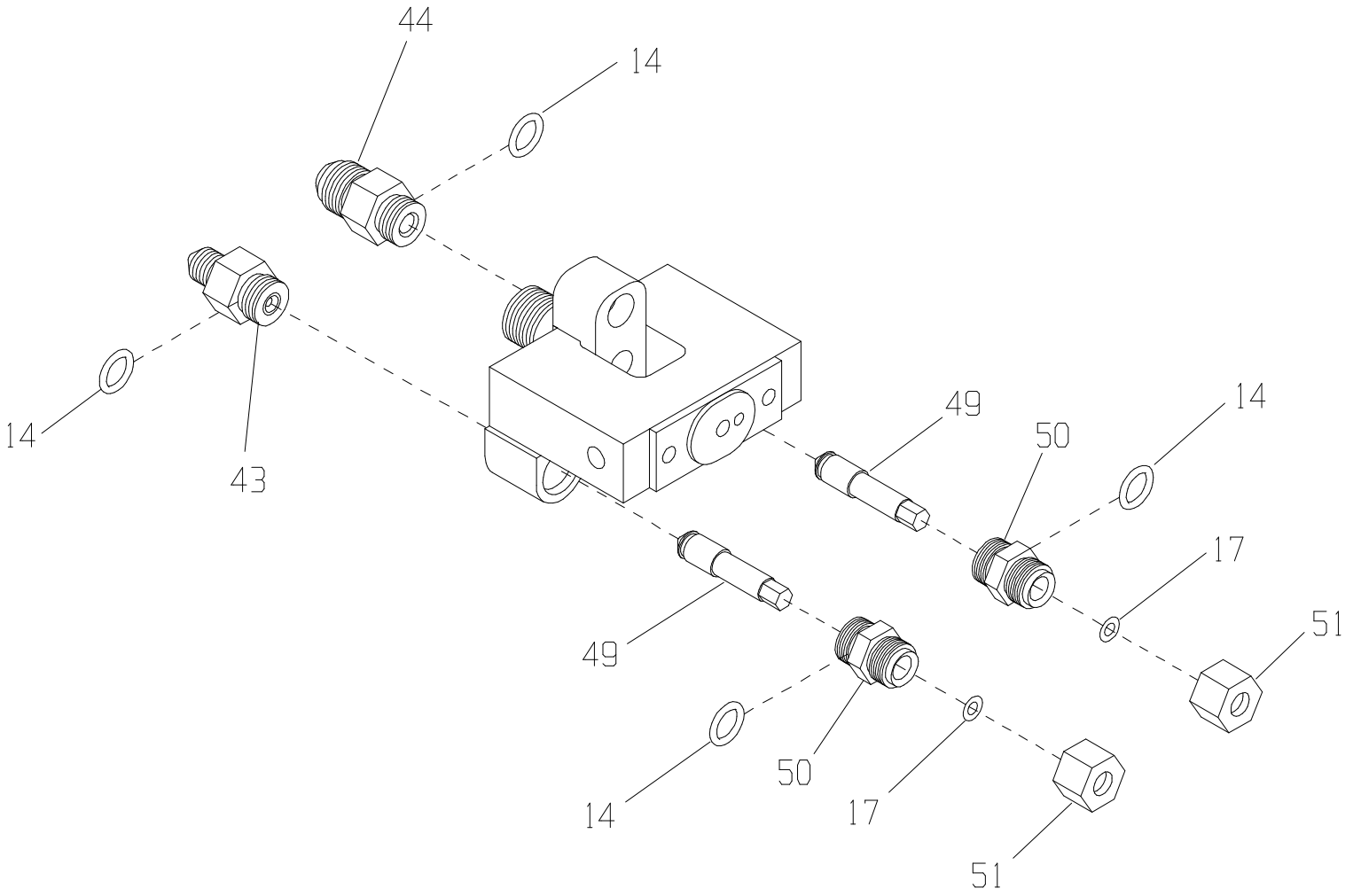
# DMX-3000-ST FILLED RESIN INTERNAL MIX GUN

08-31-13 (BT2)



# DMX-3000-ST

## PAGE 2



**DMX-3000-ST  
DURAMAX GUN  
08-30-13  
PARTS KEY**

ITEM	PART #	DESCRIPTION	QTY	ITEM	PART #	DESCRIPTION	QTY
1	7701-6-18	ELBOW	1	50	DMX-3003	NEEDLE HOUSING	2
2	54350-3	GUN HANDLE	1	51	DMX-3002	PACKING NUT	2
3	00145	SCREW	1	52	VPG-1002	DIFFUSER/GASKET	1
4	54630-1	STUD	1				
5	MAX-2040	TRIGGER	1				
6	04039-1	SPRING	2				
7	54000-1	RETAINER	2				
8	53900-1	NEEDLE GUIDE	2				
9	53800-1	JAM NUT	2				
10	MG-1022	PACKING NUT	2				
11*	MAX-2008	PACKING SEAL	2				
12	MAX-2009	SEAL RETAINER	2				
13	MAX-2013	SEAL HOUSING	1				
14*	□-S-012	□-RING	7	5104-07-01		BALL VALVE FLUSH	
15	MAX-2010-01	NEEDLE	1				
16	MAX-2011-01	CARBIDE SEAT	1	DMX-3009-01		CATALYST HOUSING/SEAT ASSEMBLY - INCLUDES	
17*	□-T-010	□-RING	3			ITEM 14. □-S-012 (QTY. 2),	
18	DMX-3008-01	PISTON NEEDLE	1			ITEM 20. DMX-3009-02, AND	
20	DMX-3009-02	NEEDLE HOUSING (CAT.)	1			ITEM 46. CPR-2012-02	
21	DMX-3001-01	GUN HEAD	1				
22	F-CS-04C-12	CAP SCREW	1				
23*	□-S-018	□-RING	1	04040-1		HEAVY SPRING TO REPLACE 04039-1	
24	5104-03-01	INJECTOR	1				
25	5104-18-1	DIFFUSER	1				
26	MAX-2017-S	MIXER HOUSING	1				
27*	VPG-1003	TURBULENT MIXER	1				
28	F-CS-1024-10	CAP SCREW	2				
29	VFIT-6025	FIT NOZZLE	1				
30	8704-4-1	NOZZLE CAP	1				
31	53110-1	PLUG	1				
32*	02441-1	SEAL	1				
33	04070-1	SPRING	1				
34	MG-2031	NEEDLE	1				
35	54440-1	VALVE BODY	1				
36*	□-S-104A	□-RING	1				
37	54420-1	RETAINER	1				
38	02883-8	PIN	1				
39	56190-1	SCREW	1				
40	04420-1	SPRING	1				
41	F-HN-1024	NUT	1				
42	56100-1	NUT	1				
43	DMX-3006-01	CATALYST FITTING	1				
44	DMX-3005	MATERIAL FITTING	1				
45	5104-01-01	FLUSH VALVE	1				
46	CPR-2012-02	CATALYST SEAT	1				
47	F-MS-832-04	MACHINE SCREW	2				
48	CPR-2060-01	MOUNT	1				
49	DMX-3004	NEEDLE	2				

**SEAL KIT SOLD SEPARATELY:**

\*DMX-3000-ST-SK SEAL KIT  
KIT ALSO INCLUDES 5104-13-1 INJECTOR  
SEAL FOR PART 24. 5104-03-01

**OPTIONAL EQUIPMENT:**

5104-07-01 BALL VALVE FLUSH  
DMX-3009-01 CATALYST HOUSING/SEAT  
ASSEMBLY - INCLUDES  
ITEM 14. □-S-012 (QTY. 2),  
ITEM 20. DMX-3009-02, AND  
ITEM 46. CPR-2012-02  
04040-1 HEAVY SPRING TO REPLACE  
04039-1