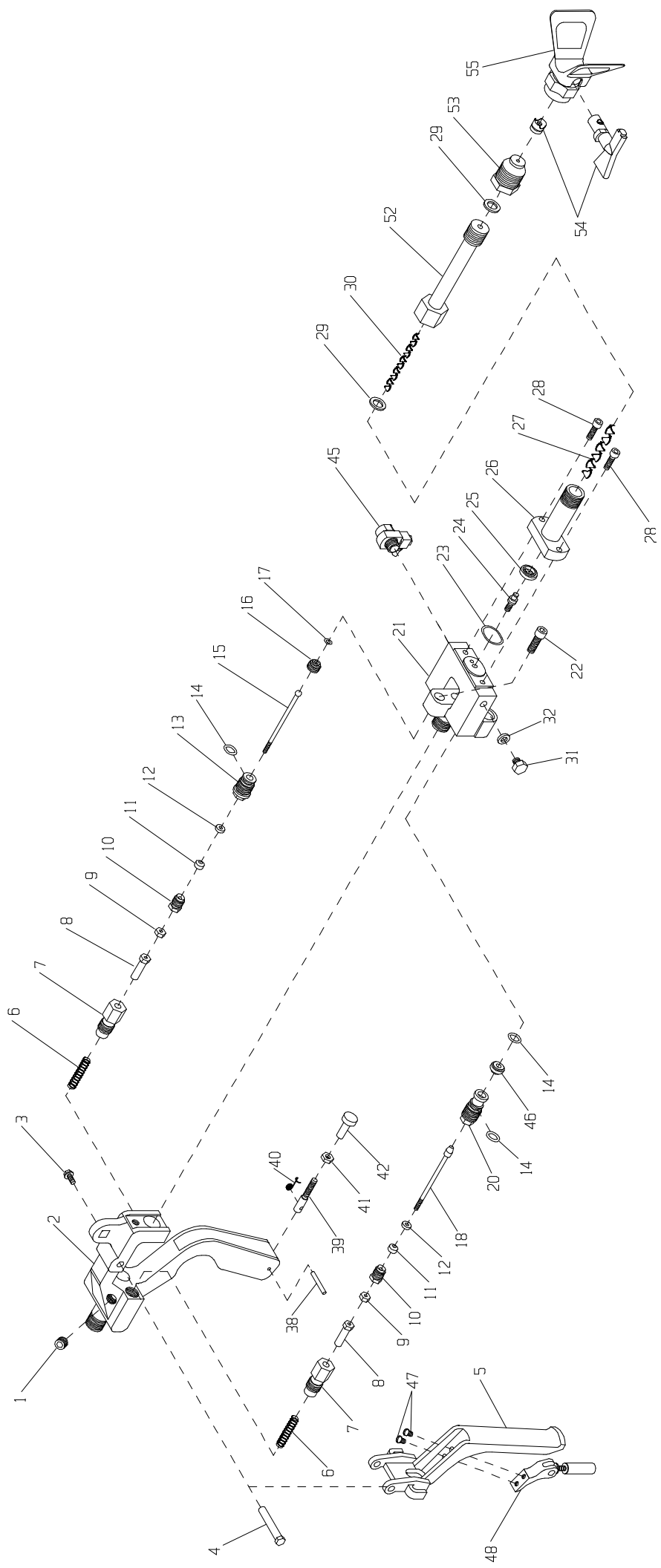
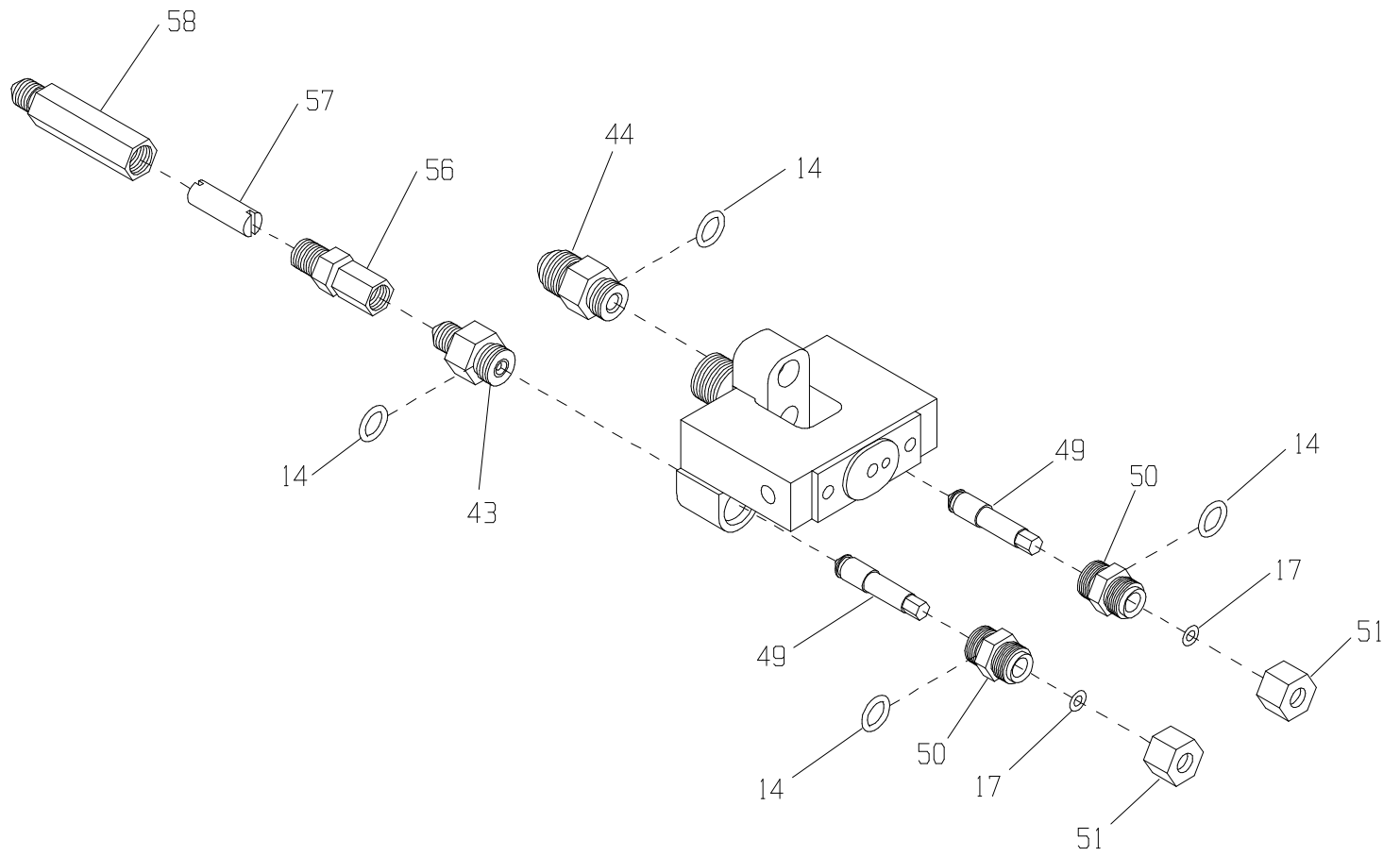


**DMX-3000-ITW**  
**FILLED RESIN INTERNAL**  
**MIX GUN**

10-17-12 (BT2)



DMX-3000-ITW  
PAGE 2



**DMX-3000-ITW  
DURAMAX GUN  
10-17-12  
PARTS KEY**

ITEM	PART #	DESCRIPTION	QTY	ITEM	PART #	DESCRIPTION	QTY
1	PF-AP-02	ALLEN PLUG	1	50	DMX-3003	NEEDLE HOUSING	2
2	54350-3	GUN HANDLE	1	51	DMX-3002	PACKING NUT	2
3	00145	SCREW	1	52	50091-1	HOUSING	1
4	54630-1	STUD	1	53	181085	ADAPTER	1
5	MAX-2040	TRIGGER	1	54	XHDXXX	TIP AND SEAL (XXX = TIP SIZE)	1
6	04040-1	SPRING	2	55	XHD001	GUARD	1
7	54000-1	RETAINER	2	56	PF-SW-02-03J-SS	SWIVEL ADAPTER	1
8	53900-1	NEEDLE GUIDE	2	57	TRU-1046-A	RESTRICTOR	1
9	53800-1	JAM NUT	2	58	TRU-1059	HOUSING	1
10	MG-1022	PACKING NUT	2				
11*	MAX-2008	PACKING SEAL	2				
12	MAX-2009	SEAL RETAINER	2				
13	MAX-2013	SEAL HOUSING	1				
14*	□-S-012	□-RING	7				
15	MAX-2010-01	NEEDLE	1				
16	MAX-2011-01	CARBIDE SEAT	1				
17*	□-T-010	□-RING	3				
18	DMX-3008-01	PISTON NEEDLE	1				
20	DMX-3009-02	NEEDLE HOUSING (CAT.)	1				
21	DMX-3001-01	GUN HEAD	1				
22	F-CS-04C-12	CAP SCREW	1				
23*	□-S-018	□-RING	1				
24	5104-03-01	INJECTOR	1				
25	5104-18-1	DIFFUSER	1				
26	MAX-2017-S	MIXER HOUSING	1				
27*	VPG-1003	3/8" MIXER	1				
28	F-CS-1024-10	CAP SCREW	2				
29*	02149-1	SEAL	2				
30*	MIX-1080	MIXER	1				
31	53110-1	PLUG	1				
32*	02441-1	SEAL	1				
38	02883-8	PIN	1				
39	56190-1	SCREW	1				
40	04420-1	SPRING	1				
41	F-HN-1024	NUT	1				
42	56100-1	NUT	1				
43	DMX-3006-01	CATALYST FITTING	1				
44	DMX-3005	MATERIAL FITTING	1				
45	5104-01-01	FLUSH VALVE	1				
46	CPR-2012-02	CATALYST SEAT	1				
47	F-MS-832-04	MACHINE SCREW	2				
48	CPR-2060-01	MOUNT	1				
49	DMX-3004	NEEDLE	2				

**SEAL KIT SOLD SEPARATELY:**

\*DMX-3000-ITW-SK SEAL KIT  
KIT ALSO INCLUDES 5104-13-1 INJECTOR  
SEAL FOR PART 24, 5104-03-01

**OPTIONAL EQUIPMENT:**

5104-07-01 BALL VALVE FLUSH

DMX-3009-01 CATALYST HOUSING/SEAT  
ASSEMBLY - INCLUDES:  
ITEM 14, □-S-012 (QTY. 2),  
ITEM 20, DMX-3009-02, AND  
ITEM 46, CPR-2012-02

50090-1 STATIC MIXER ASSEMBLY  
INCLUDES:  
ITEM 29, 02149-1 (QTY. 2)  
ITEM 30, 8705-1-1  
ITEM 52, 50091-1

XHD010 SEAL ONLY (THIS SEAL IS  
INCLUDED WITH XHDXXX TIP)