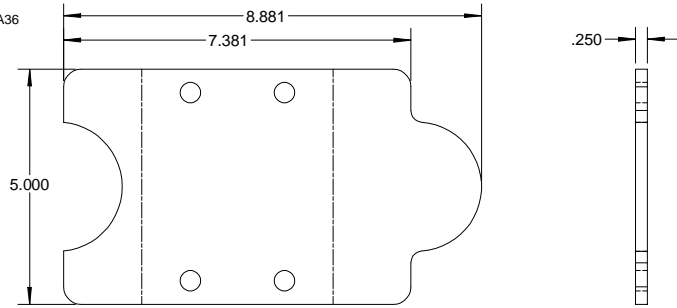
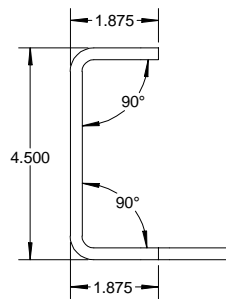
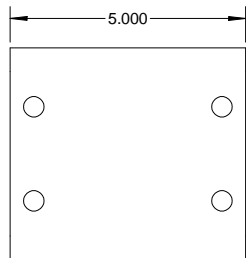
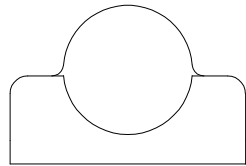


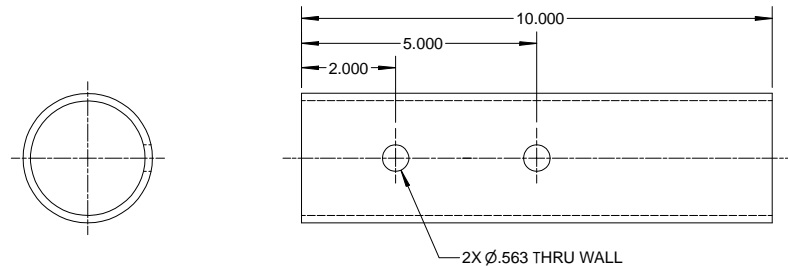
ITEM 1  
CFS-BRKT-SM-1-02  
1/4 X 5.000 X 8.881 HRS PLATE A36  
WATERJET PER DXF



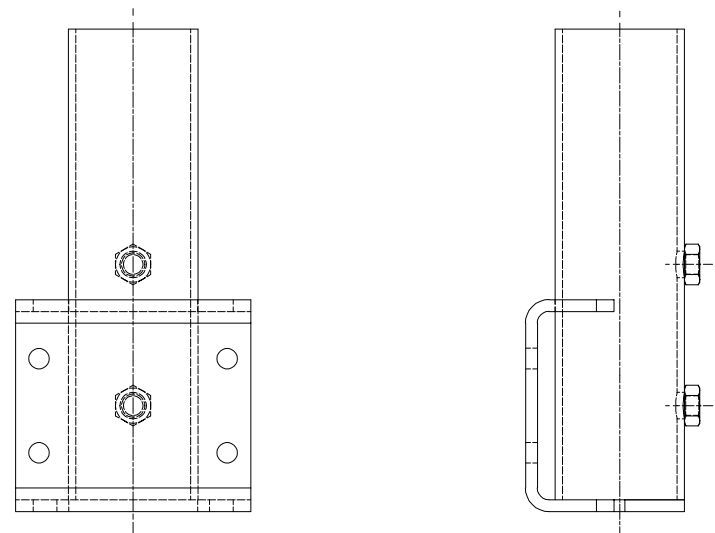
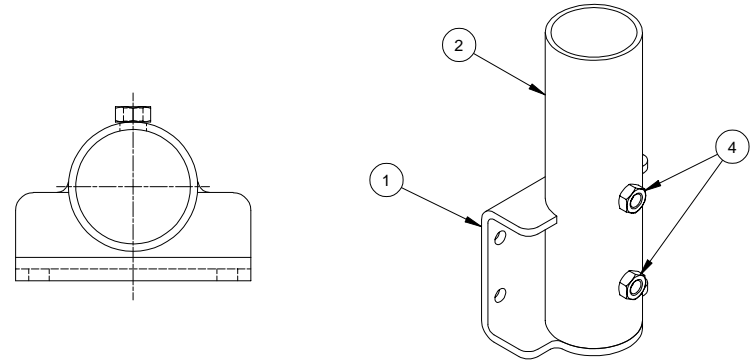
FLAT PATTERN



ITEM 2  
INV3-BRKT-CB-1-03  
Ø2.750 X .156 WALL X 10.000 1020 DOM TUBE



REVISION HISTORY			
REV	DESCRIPTION	DATE	APPROVED
-	INITIAL RELEASE	10/11/2017	BT2
A	REDESIGNED ITEM 1 AND ELIMINATED SEPARATE ROUND CAP PIECE	4/15/2019	BT2



ITEM	PART NUMBER	QTY	DESCRIPTION	SPECIFICATION
4	F-HN-08C	2	HEX NUT	1/2-13 UNC-2B
2	CFS-BRKT-SM-1-03	1	TUBE	Ø2.750 X .156 WALL X 10.000 1020 DOM TUBE
1	CFS-BRKT-SM-1-02	1	MOUNT PLATE	1/4 X 4 X 7.006 HRS PLATE

Parts List		SPECIFICATION	
 CORPORATE HEADQUARTERS TECHNOLOGY CENTER 10535 Hardin Valley Road Knoxville, TN 37932 865.686.5670		TOLERANCES UNLESS OTHERWISE SPECIFIED ALL DIMENSIONS ARE IN INCHES DECIMALS .XX ± .010 FRACTIONS 1/16" ± .002 ANGULAR TIR ± .005 25° 30' ± 1.00° 30' ± 1.25' XX° ± 1.25'	
ALL DIMENSIONS APPLY AFTER FINISH BREAK SHARP EDGES .005 MAX RADII .005 X 45° MAX CHAMFER		WELDMENT DESIGNED BJS DATE 10/11/2017 DRAWN BT2 DESCRIPTION STATION MOUNT	
PROJECT DWG NO CFS-BRKT-SM-1		SHEET 1 OF 1 REV A	

\*\*\*CONFIDENTIAL\*\*\*  
This document contains proprietary information that is the sole property of MVP. Distribution, reproduction, disclosure or use by others, in part or in whole, is not permitted without prior written permission of MVP and all rights herein reserved.