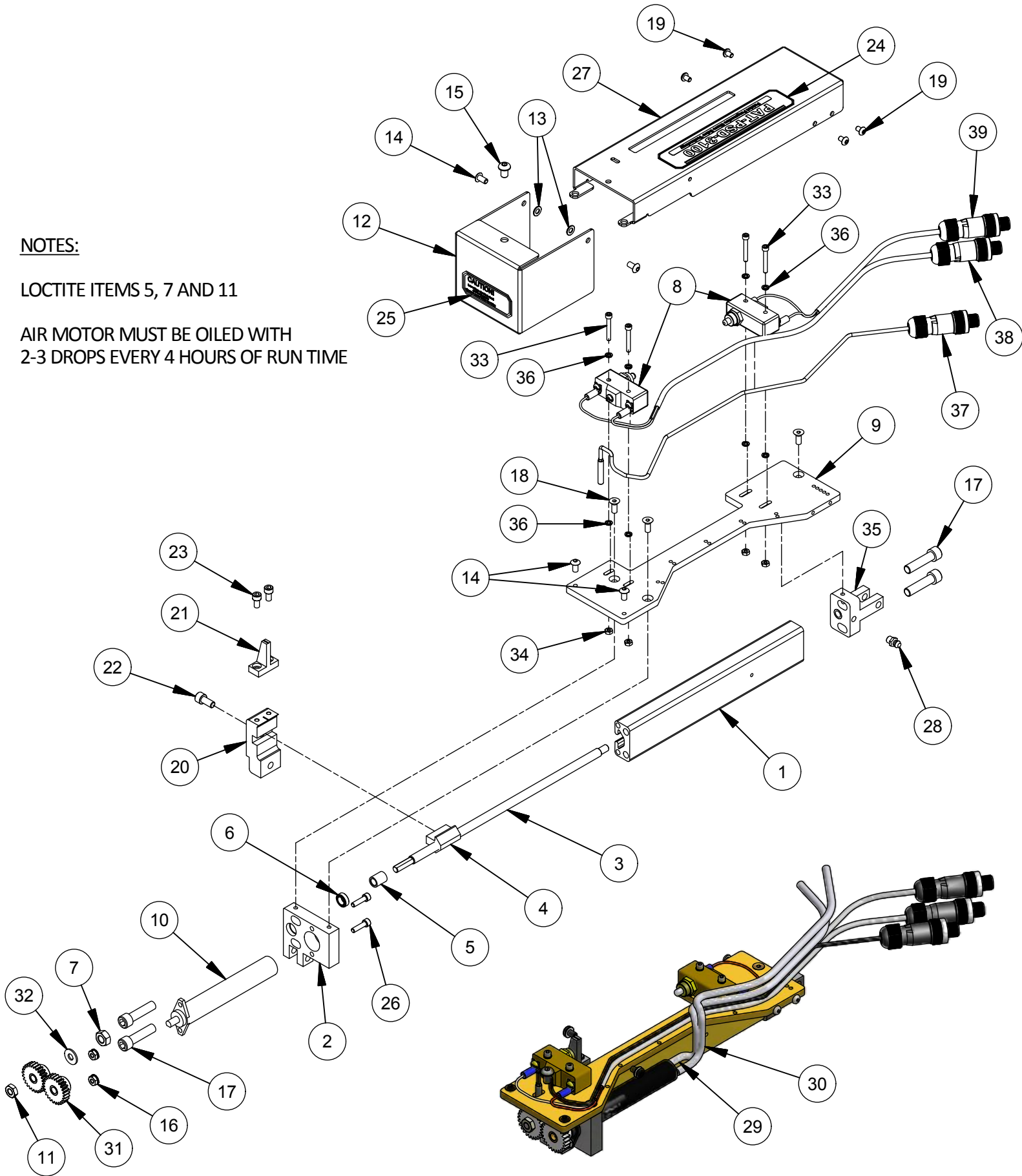


NOTES:

LOCTITE ITEMS 5, 7 AND 11

AIR MOTOR MUST BE OILED WITH
2-3 DROPS EVERY 4 HOURS OF RUN TIME



MAGNUM VENUS PLASTECH

PNEUMATIC PROGRESSIVE SLAVE DRIVE ASSEMBLY

PAT-PSD-3100

Parts List			
ITEM	PART NUMBER	QTY	DESCRIPTION
1	PAT-SD-3102	1	SLAVE ARM
2	PAT-PSD-3103	1	MOTOR MOUNT
3	PAT-PSD-3102	1	DRIVE SCREW
4	PAT-PSD-3106	1	SLAVE ARM T NUT
5	PAT-PSD-3108	1	STOP SLEEVE
6	PAT-PSD-3115	1	BALL BEARING
7	F-HN-05F	1	HEX NUT
8	9807-2-1	2	PRESSURE SWITCH
9	PAT-PSD-3101	1	BASE PLATE
10	PAT-PSD-3111	1	AIR MOTOR
11	F-HN-04F	1	HEX NUT
12	PAT-PSD-3114	1	FRONT COVER
13	5106-3-1	2	MOUNTING SEAL
14	F-BHCS-1024-06	4	BUTTON HEAD CAP SCREW
15	F-BHCS-04C-06	1	BUTTON HEAD CAP SCREW
16	F-KN-832	2	KEP NUT
17	F-CS-05C-20	4	CAP SCREW
18	F-FHCS-1024-08	3	FLAT HEAD SCREW
19	F-BHCS-832-04	4	BUTTON HEAD CAP SCREW
20	PAT-PSD-3107	1	SLIDE CLEVIS
21	PAT-PSD-3105	1	SLIDE CLEVIS FLAG
22	F-CS-04C-08	1	CAP SCREW
23	F-CS-1024-06	2	CAP SCREW
24	PAT-PSD-DECAL-1	1	COVER DECAL
25	PAT-PSD-DECAL-2	1	WARNING DECAL
26	F-CS-832-10-GR8	2	CAP SCREW
27	PAT-PSD-3113	1	REAR COVER
28	05563	1	GREASE FITTING
29	MS-2052-1	2 FT	.250" NATURAL POLY
30	MS-2052-1	2 FT	.250" NATURAL POLY
31	PAT-PSD-3112	2	NYLON GEAR
32	PAT-PSD-3110	1	DRIVE SCREW BUSHING
33	F-CS-632-16	4	HEX SOCKET CAP SCREW - Inch
34	F-HN-632	4	HEX NUT
35	PAT-PSD-3109	1	HEAD CLEVIS ASSEMBLY
36	7202-6-6	8	LOCK WASHER
37	E-SEN-102-MLC	1	SENSOR
38	PAT-PSD-MLC-1	1	MALE LINE CONNECTOR
39	PAT-PSD-MLC-2	1	MALE LINE CONNECTOR

MAGNUM VENUS PLASTECH

PNEUMATIC PROGRESSIVE SLAVE DRIVE ASSEMBLY

PAT-PSD-3100