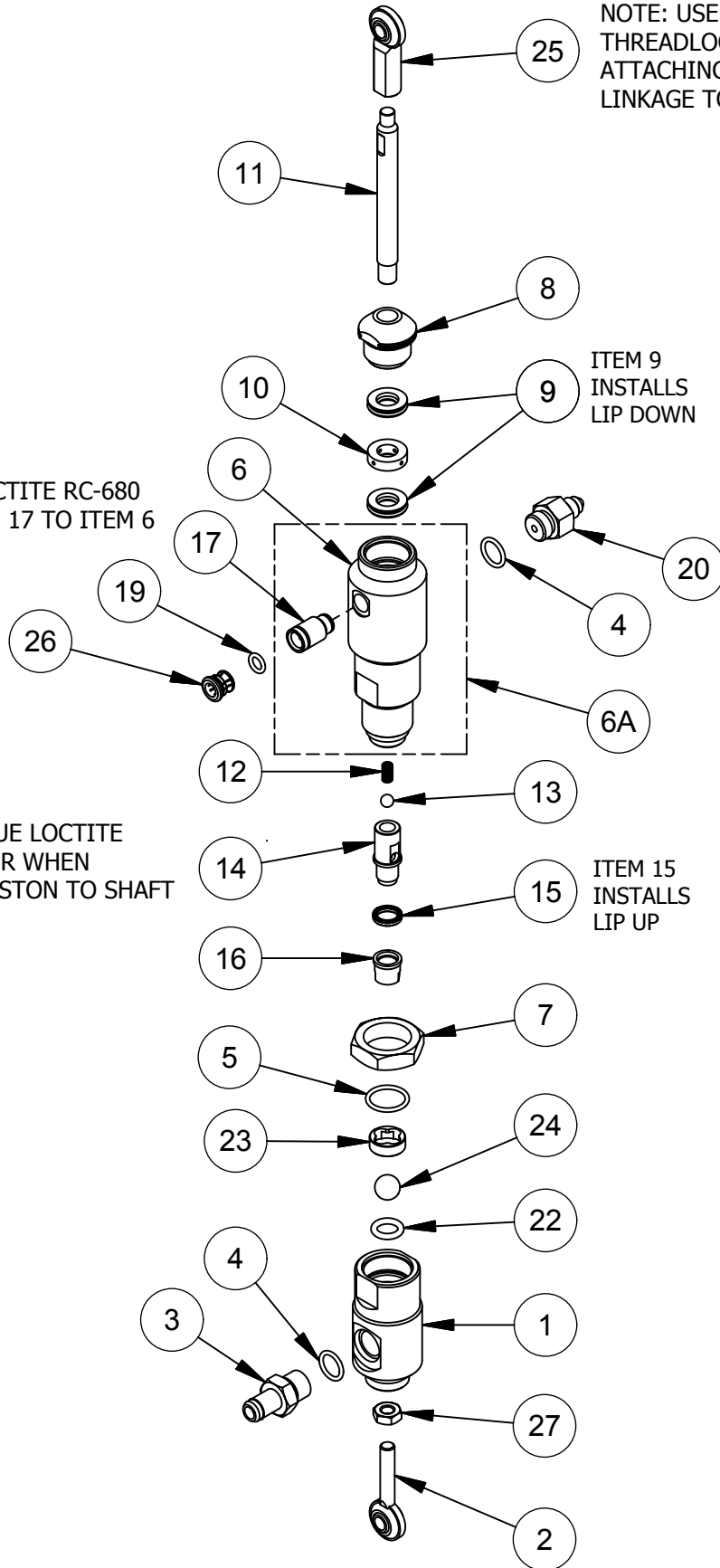


NOTE: USE LOCTITE RC-680  
TO BOND ITEM 17 TO ITEM 6

NOTE: USE BLUE LOCTITE  
THREADLOCKER WHEN  
ATTACHING PISTON TO SHAFT

NOTE: USE BLUE LOCTITE  
THREADLOCKER WHEN  
ATTACHING BALL JOINT  
LINKAGE TO SHAFT



# MAGNUM VENUS PRODUCTS

PATRIOT CATALYST PUMP

PAT-CP-0980

REV:A 03/22/2016

| Parts List |             |             |             |                            |
|------------|-------------|-------------|-------------|----------------------------|
| ITEM       | PART NUMBER | QTY         | DESCRIPTION |                            |
|            | 1           | PAT-CP-0902 | 1           | INLET BODY                 |
|            | 2           | PAT-CP-0504 | 1           | BALL JOINT LINKAGE         |
|            | 3           | 4101-8-1    | 1           | INLET FITTING              |
| *          | 4           | O-S-013     | 2           | O-RING                     |
| *          | 5           | O-S-016     | 1           | O-RING                     |
|            | 6           | PAT-CP-0903 | 1           | OUTLET BODY                |
|            | 7           | 50820-1     | 1           | LOCK NUT                   |
|            | 8           | PAT-CP-0906 | 1           | RETAINING NUT              |
| *          | 9           | PAT-CP-0901 | 2           | ROD SEAL ASSY              |
| *          | 10          | PAT-CP-0907 | 1           | LEAK SPACER                |
|            | 11          | PAT-CP-0908 | 1           | FLUID ROD                  |
|            | 12          | 04013-1     | 1           | PISTON SPRING              |
|            | 13          | 9201-1-7    | 1           | SS BALL 7/32"              |
|            | 14          | 50440-1     | 1           | PISTON BODY                |
| *          | 15          | 02014       | 1           | PISTON SEAL -SPRING LOADED |
|            | 16          | 50530-1     | 1           | SEAL RETAINER              |
|            | 17          | PAT-CP-0505 | 1           | FITTING BODY               |
| *          | 19          | O-S-010     | 1           | O-RING                     |
|            | 20          | 51501-1     | 1           | OUTLET FITTING             |
|            | 22          | O-F-110     | 1           | O-RING                     |
|            | 23          | PAT-CP-0909 | 1           | BALL CAGE                  |
|            | 24          | 9201-1-14   | 1           | SS BALL Ø7/16              |
|            | 25          | MS-1022     | 1           | BALL JOINT - FEMALE        |
|            | 26          | 4105-5-1    | 1           | LOCK COLLAR                |
|            | 27          | F-HN-04F    | 1           | HEX NUT                    |

REPAIR KIT

\* PAT-CP-0980-SK (ASTERISK DENOTES PARTS IN KIT)

ASSOCIATED PARTS AND ASSEMBLIES

6A PAT-CP-0903-A OUTLET BODY ASSEMBLY

# MAGNUM VENUS PRODUCTS

PATRIOT CATALYST PUMP

PAT-CP-0980