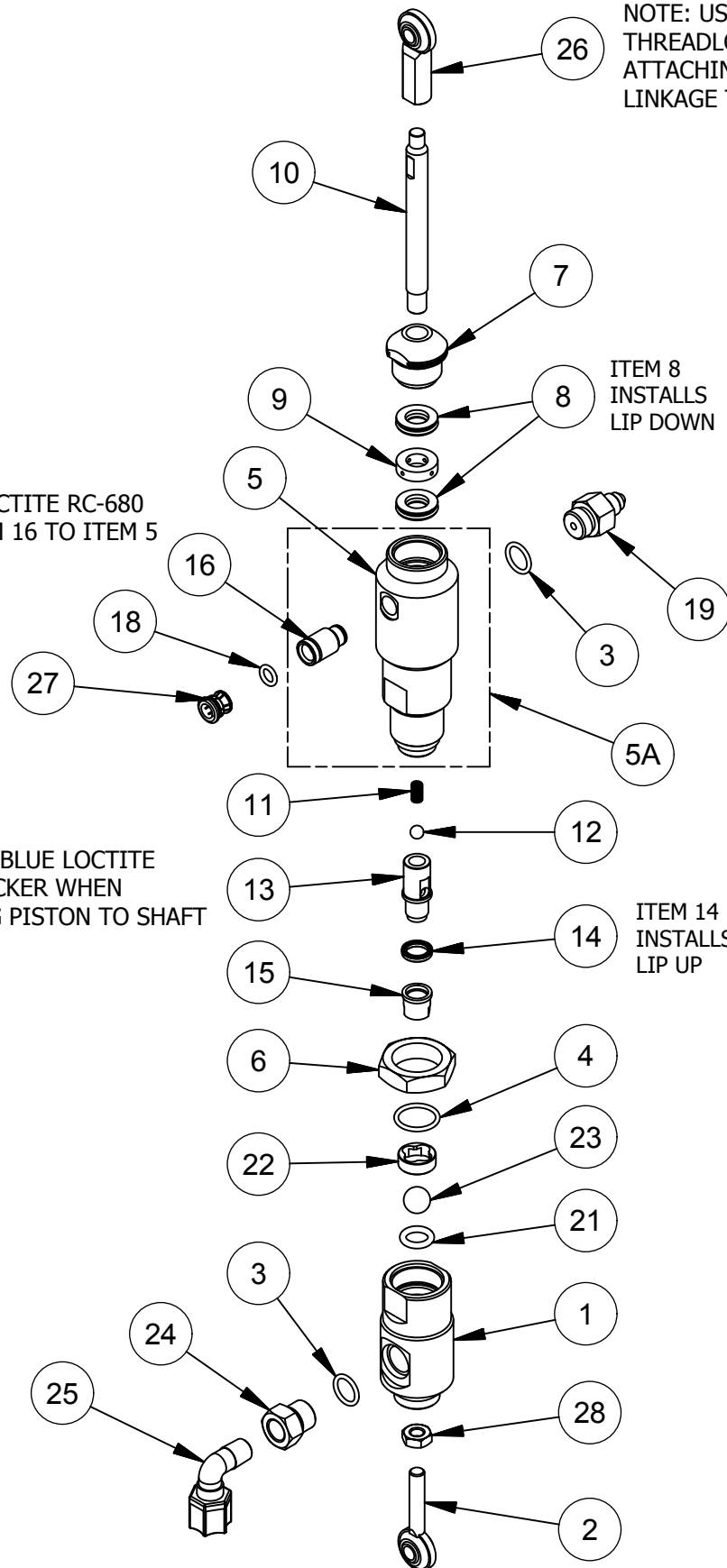


NOTE: USE LOCTITE RC-680
TO BOND ITEM 16 TO ITEM 5

NOTE: USE BLUE LOCTITE
THREADLOCKER WHEN
ATTACHING PISTON TO SHAFT

NOTE: USE BLUE LOCTITE
THREADLOCKER WHEN
ATTACHING BALL JOINT
LINKAGE TO SHAFT



MAGNUM VENUS PRODUCTS

PATRIOT SIPHON FED CAT PUMP

PAT-CP-0980-S

Parts List				
ITEM	PART NUMBER	QTY	DESCRIPTION	
	1	PAT-CP-0902	1	INLET BODY
	2	PAT-CP-0504	1	BALL JOINT LINKAGE
*	3	O-S-013	2	O-RING
*	4	O-S-016	1	O-RING
	5	PAT-CP-0903	1	OUTLET BODY
	6	50820-1	1	LOCK NUT
	7	PAT-CP-0906	1	RETAINING NUT
*	8	PAT-CP-0901	2	ROD SEAL ASSY
*	9	PAT-CP-0907	1	LEAK SPACER
	10	PAT-CP-0908	1	FLUID ROD
	11	04013-1	1	PISTON SPRING
	12	9201-1-7	1	SS BALL 7/32"
	13	50440-1	1	PISTON BODY - C42
*	14	02014	1	PISTON SEAL -SPRING LOADED
	15	50530-1	1	SEAL RETAINER
	16	PAT-CP-0505	1	FITTING BODY
*	18	O-S-010	1	O-RING
	19	51501-1	1	OUTLET FITTING
	21	O-F-110	1	O-RING
	22	PAT-CP-0909	1	BALL CAGE
	23	9201-1-14	1	SS BALL \varnothing 7/16
	24	VHPC-1003	1	INLET TUBE FITTING
	25	MS-2053	1	MALE ELBOW - TUBE
	26	MS-1022	1	BALL JOINT - FEMALE
	27	4105-5-1	1	LOCK COLLAR
	28	F-HN-04F	1	HEX NUT

REPAIR KIT

* PAT-CP-0980-SK (ASTERISKS DENOTE PARTS IN KIT)

ASSOCIATED PARTS AND ASSEMBLIES

5A PAT-CP-0903-A OUTLET BODY ASSEMBLY

MAGNUM VENUS PRODUCTS

PATRIOT SIPHON FED CAT PUMP

PAT-CP-0980-S