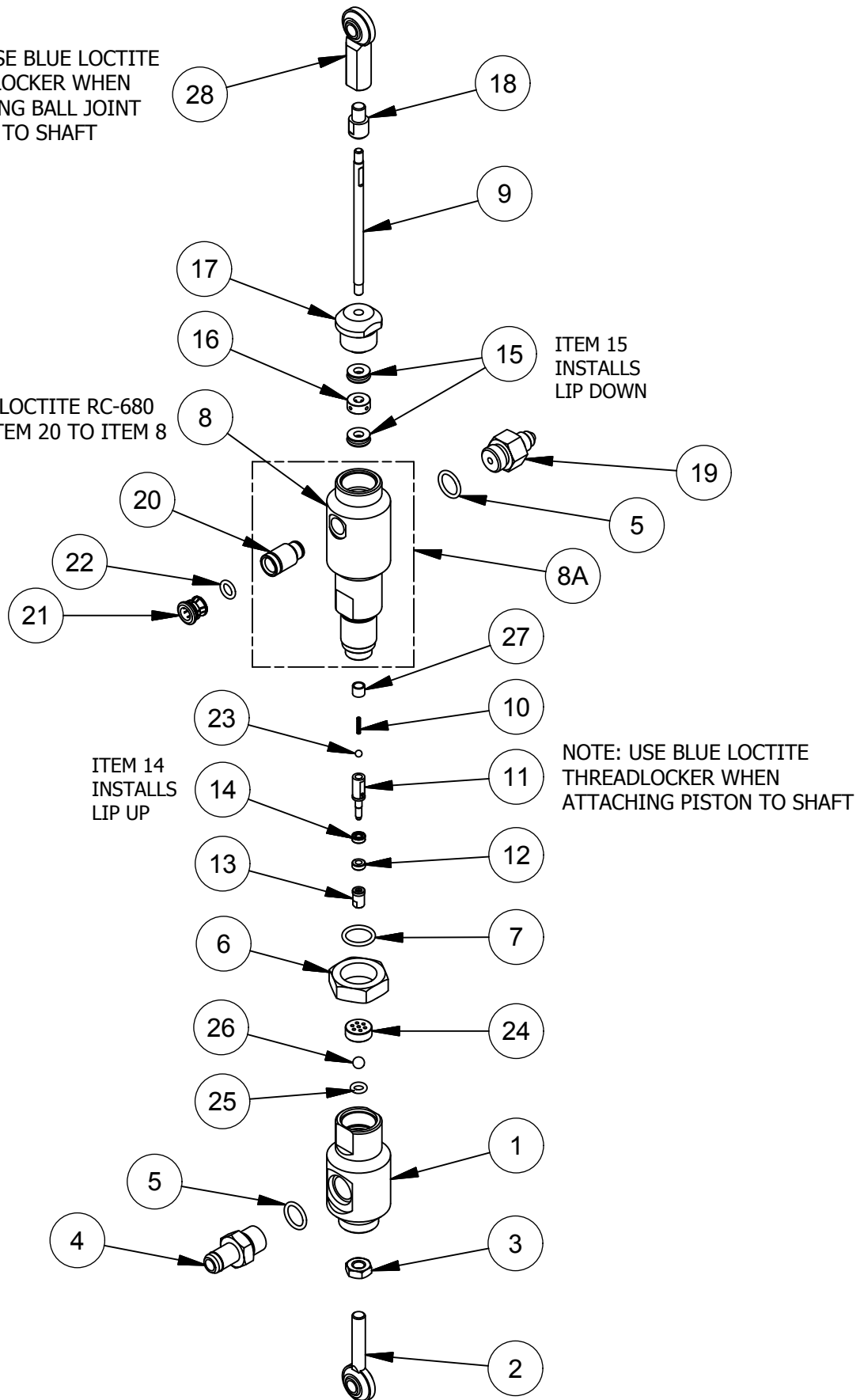


NOTE: USE BLUE LOCTITE  
THREADLOCKER WHEN  
ATTACHING BALL JOINT  
LINKAGE TO SHAFT

NOTE: USE LOCTITE RC-680  
TO BOND ITEM 20 TO ITEM 8



# MAGNUM VENUS PRODUCTS

PATRIOT CATALYST PUMP

PAT-CP-0245

REV: B 03/22/2016

Parts List				
ITEM	PART NUMBER	QTY	DESCRIPTION	
	1	PAT-CP-0202	1	INLET BODY
	2	PAT-CP-0504	1	BALL JOINT LINKAGE
	3	F-HN-04F	1	HEX NUT
	4	4101-8-1	1	INLET FITTING
*	5	O-S-013	2	O-RING
	6	4101-1-1	1	LOCK NUT
*	7	O-S-014	1	O-RING
	8	PAT-CP-0203	1	OUTLET BODY
	9	PAT-CP-0208	1	FLUID ROD
	10	SPR-C-1003	1	SPRING
	11	PAT-CP-0212	1	PISTON BODY
*	12	PAT-CP-0214	1	PISTON GUIDE
	13	PAT-CP-0213	1	SEAL RETAINER
*	14	PAT-CP-0215	1	PISTON SEAL
*	15	PAT-CP-0201	2	ROD SEAL ASSY
*	16	PAT-CP-0207	1	LEAK SPACER
	17	PAT-CP-0206	1	RETAINING NUT
	18	PAT-CP-0210	1	ROD ADAPTER
	19	51501-1	1	OUTLET FITTING
	20	PAT-CP-0505	1	FITTING BODY
	21	4105-5-1	1	LOCK COLLAR
*	22	O-S-010	1	O-RING
	23	9201-1-4	1	SS BALL 1/8
	24	PAT-CP-0209	1	BALL CAGE
	25	O-F-008	1	O-RING
	26	9201-1-7	1	SS BALL 7/32"
*	27	PAT-CP-0211	1	PISTON STOP
	28	MS-1022	1	BALL JOINT - FEMALE

REPAIR KIT

\* PAT-CP-0245-RK (ASTERISKS DENOTE PARTS IN KIT)

ASSOCIATED PARTS AND ASSEMBLIES

8A PAT-CP-0203-A OUTLET BODY ASSEMBLY

# MAGNUM VENUS PRODUCTS

PATRIOT CATALYST PUMP

PAT-CP-0245