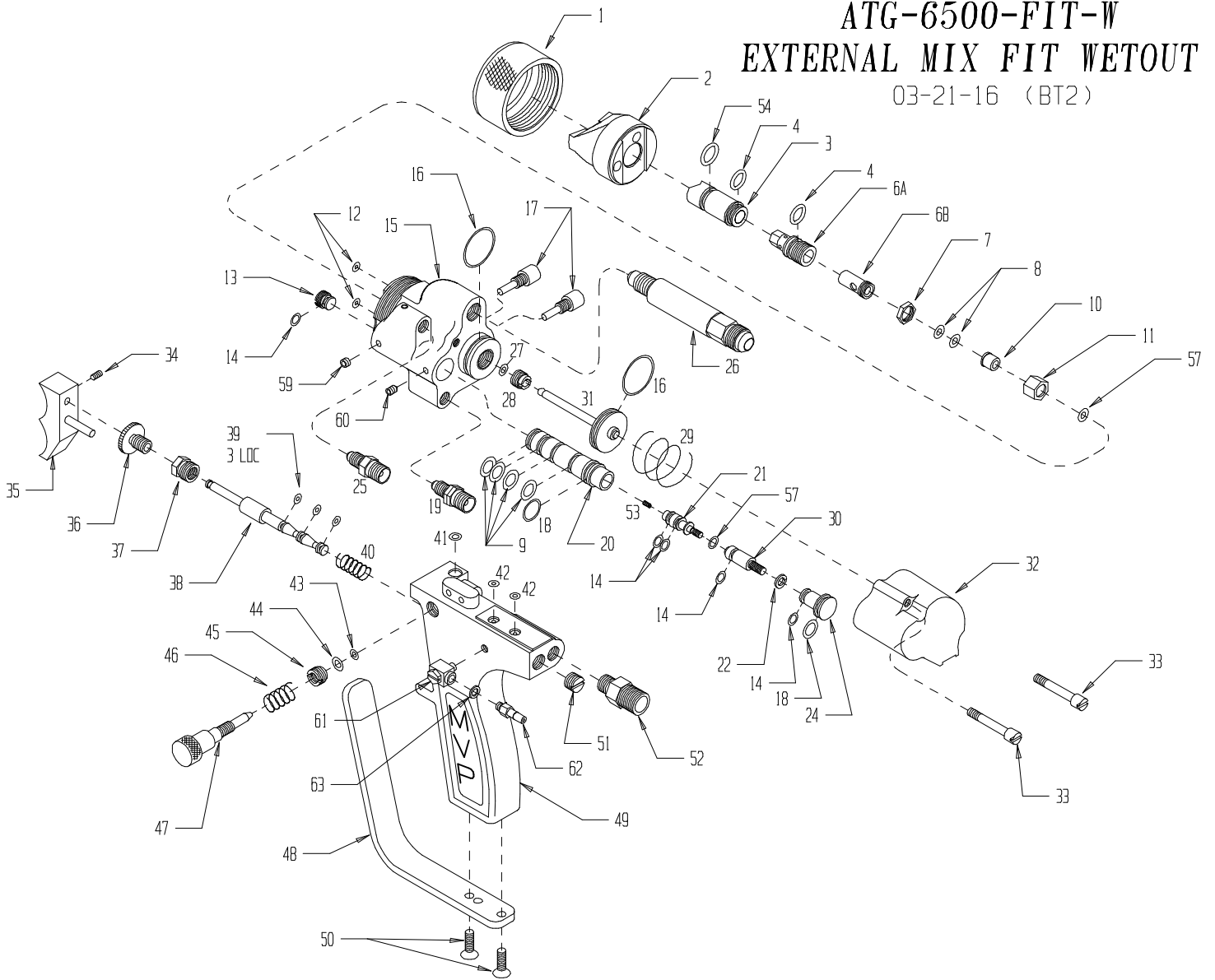


ATG-6500-FIT-W EXTERNAL MIX FIT WETOUT GUN

03-21-16 (BT2)



**ATG-6500-FIT-W
FIT WETOUT GUN
03-21-16
PARTS KEY**

ITEM	PART #	DESCRIPTION	QTY	ITEM	PART #	DESCRIPTION	QTY
1	MG-1018-CL-PL	RETAINING RING	1	47	ATC-40505	AIR ADJUSTING SCREW	1
2	UGT-35402	CATALYST TIP	1	48	ATC-40709	GUARD	1
3	UMT-6025	SPRAY TIP (OR XXXX = SIZE)	1	49	ATC-4003-SIG	HANDLE ASSEMBLY	1
4*	□-E-012	□-RING	2	50	F-FHCS-1032-08	GUARD SCREW	2
6A	ATC-40323-A	DIFFUSER SEAT	1	51	ATC-40106	PLUG	1
6B	ATC-40323-B	PACKING RETAINER	1	52	PF-HN-02-04S	AIR FITTING	1
7	ATC-40319	LOCKNUT	1	53	ATC-40611	RESTRICTOR (.040")	1
8*	ATC-40304	PACKING (SET OF 2)	1	54*	□-E-013	□-RING	1
9*	□-S-012A	□-RING	4	57*	□-T-008	□-RING	2
10	ATC-40318	PACKING PRESS	1	59	F-SS-1032-02-SS	SET SCREW	1
11	ATC-40317	PACKING HOUSING	1	60	ATC-40616	SET SCREW	1
12*	□-S-006	□-RING	2	61	TRU-1021	ELBOW	1
13	ATC-40201	CAT. CYLINDER PLUG	1	62	TRU-1022	BARB	1
14*	□-S-008	□-RING	5	63	7304-3-1	SEAL	1
15	ATG-3501	HEAD (SEE NOTE B)	1	SEAL KIT SOLD SEPARATELY			
16*	□-S-020	□-RING	2	* AT-EXT-SK SEAL KIT			
17	ATC-40701	SCREW	2	HOSES AVAILABLE SEPARATELY:			
18*	□-S-013	□-RING	2	6:1 RATIO PUMP			
19	ATC-40214	CATALYST FITTING	1	FLUID HOSE - HFL-0888-XX WITH			
20	ATC-40206	CATALYST CYLINDER	1	HFL-046J6J-5 (WHIP END)			
21	ATC-40704	VALVE FRONT	1	11:1 RATIO PUMP			
22	ATC-40208	LOCK WASHER	1	FLUID HOSE - HAW-0888-XX WITH			
24	ATC-40209	CATALYST PISTON	1	HAW-046J6J-5 (WHIP END)			
25	ATC-40213	AIR FITTING	1	REFINEMENT/TRIGGER AIR HOSE - HA-0344-XX			
26	ATC-40311-F	MATERIAL TUBE	1	CATALYST HOSE - HC-0224-XX			
27*	□-E-008	□-RING	1	CATALYST ATOMIZING AIR HOSE - HA-0224-XX			
28	ATC-40305	PACKING RETAINER	1	XX = HOSE LENGTH DESIRED (25 FT. IS STANDARD)			
29	ATC-40325	SPRING	1				
30	ATC-40705	VALVE BACK	1				
31	ATC-40321	NEEDLE ASSY.	1				
32	ATG-3502	GUN BACK	1				
33	ATC-40501	RETAINING SCREW	2				
34	ATC-40108	SET SCREW	1				
35	ATC-40113	BUTTON ASSEMBLY	1				
36	ATC-40111	TRIGGER LOCK	1				
37	ATC-40101	TRIGGER HOUSING	1				
38	ATC-40103	TRIGGER VALVE	1				
39*	□-E-006	□-RING	3				
40	ATC-40105	SPRING	1				
41*	□-B-008	□-RING	1				
42*	□-B-006	□-RING	2				
43*	□-B-007	□-RING	1				
44*	ATC-40304-1	□-RING	1				
45	ATC-40509	INSERT	1				
46	ATC-40506	SPRING	1				

ATG-6500-FIT-W
FIT WETOUT GUN
03-21-16
PARTS KEY, PAGE 2

OPTIONAL EQUIPMENT:

ATC-40611-1 .020" CATALYST RESTRICTOR

ATC-40314 CARTRIDGE ASSEMBLY WHICH INCLUDES
ITEMS 4 - 11 AND ATC-40323-BT

ATC-40323-A-TL 5/16 NUT DRIVER

ATC-40323-BT TOOL FOR ATC-40323-A

ATC-40103-1 TRIGGER VALVE O-RING TOOL

ATC-40204-1 CAT. VALVE O-RING TOOL

MG-1018 ALUMINUM RETAINING RING

FGT-40402 FGT STYLE CATALYST TIP

FMT-XXXX FMT STYLE SPRAY TIP

NOTE A:

TRIGGER VALVE O-RINGS ARE MADE OF EPR RUBBER
AND CAN ONLY BE LUBRICATED WITH "SUPER O LUBE".

NOTE B:

ATG-3501 HEAD ASSEMBLY INCLUDES ITEM
20. ATC-40206, ITEM 9. O-S-012A, ITEM
59. F-SS-1032-02-SS, AND ITEM
60. ATC-40616