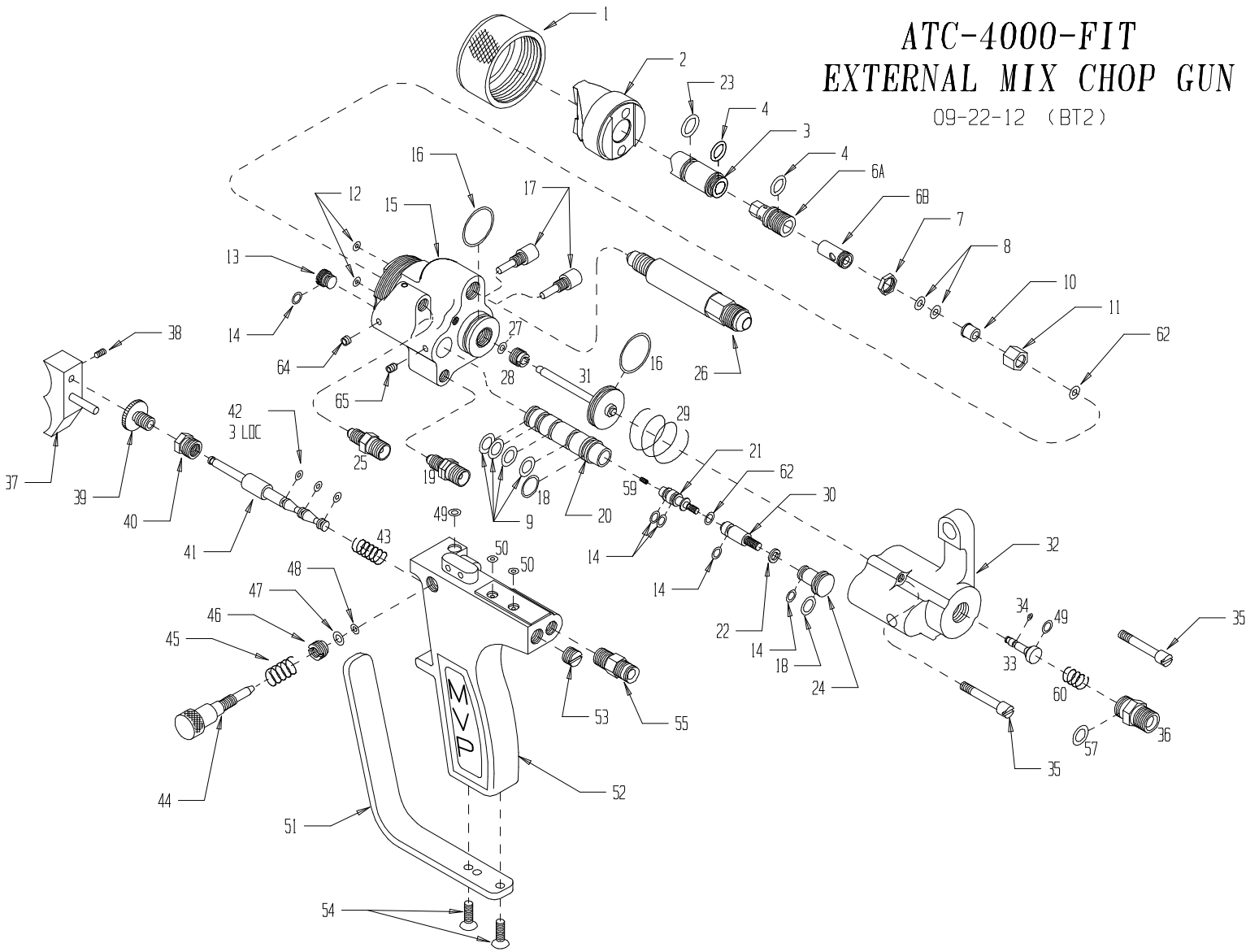


ATC-4000-FIT EXTERNAL MIX CHOP GUN

09-22-12 (BT2)



**ATC-4000-FIT
CHOPPER GUN
09-22-12
PARTS KEY, PAGE 1**

ITEM	PART #	DESCRIPTION	QTY	ITEM	PART #	DESCRIPTION	QTY
1	MG-1018-CL-PL	RETAINING RING	1	44	ATC-40505	AIR ADJUSTING SCREW	1
2	UMT-40402	CATALYST TIP	1	45	ATC-40506	SPRING	1
3	UMT-XXXX	SPRAY TIP (XXX = SIZE)	1	46	ATC-40509	INSERT	1
4*	□-E-012	□-RING	2	47*	ATC-40304-1	□-RING	1
6A	ATC-40323-A	DIFFUSER SEAT	1	48*	□-B-007	□-RING	1
6B	ATC-40323-B	PACKING RETAINER	1	49*	□-B-008	□-RING	2
7	ATC-40319	LOCKNUT	1	50*	□-B-006	□-RING	2
8*	ATC-40304	PACKING (SET OF 2)	1	51	ATC-40709	GUARD	1
9*	□-S-012A	□-RING	4	52	ATC-4003-2	HANDLE ASSY.	1
10	ATC-40318	PACKING PRESS	1	53	ATC-40106	PLUG	1
11	ATC-40317	PACKING HOUSING	1	54	F-FHCS-1032-08	SCREW	2
12*	□-S-006	□-RING	2	55	PF-HN-02-02S	AIR FITTING	1
13	ATC-40201	CAT. CYLINDER PLUG	1	57*	□-S-012	□-RING	1
14*	□-S-008	□-RING	5	59	ATC-40611	RESTRICTOR (.040)	1
15	ATC-4001	HEAD (SEE NOTE B)	1	60	ATC-40610	SPRING	1
16*	□-S-020	□-RING	2	62*	□-T-008	□-RING	2
17	ATC-40701	SCREW	2	64	F-SS-1032-02-SS	SET SCREW	1
18*	□-S-013	□-RING	2	65	ATC-40616	SET SCREW	1
19	ATC-40214	CATALYST FITTING	1				
20	ATC-40206	CATALYST CYLINDER	1				
21	ATC-40704	VALVE FRONT	1				
22	ATC-40208	LOCK WASHER	1				
23*	□-E-013	□-RING	1				
24	ATC-40209	CATALYST PISTON	1				
25	ATC-40213	AIR FITTING	1				
26	ATC-40311-F	MATERIAL TUBE	1				
27*	□-E-008	□-RING	1				
28	ATC-40305	PACKING RETAINER	1				
29	ATC-40325	SPRING	1				
30	ATC-40705	VALVE BACK	1				
31	ATC-40321	NEEDLE ASSY.	1				
32	ATC-4002	GUN BACK	1				
33	ATC-40602	CHOPPER AIR VALVE	1				
34*	□-B-003	□-RING	1				
35	ATC-40501	SCREW	2				
36	ATC-40607	AIR FITTING	1				
37	ATC-40113	TRIGGER BUTTON	1				
38	ATC-40108	SET SCREW	1				
39	ATC-40111	TRIGGER LOCK	1				
40	ATC-40101	TRIGGER HOUSING	1				
41	ATC-40103	TRIGGER VALVE	1				
42*	□-E-006	□-RING	3				
43	ATC-40105	SPRING	1				

SEAL KIT SOLD SEPARATELY:

* AT-EXT-SK SEAL KIT

HOSES AVAILABLE SEPARATELY:

FOR 3:1 AND 6:1 RATIO PUMP:
FLUID HOSE - HFL-0888-XX WITH A
PF-HN-08S-06J NIPPLE AND A
HFL-046J6J-5 WHIP

FOR 11:1 RATIO PUMP:
FLUID HOSE - HAW-0888-XX WITH A
PF-HN-08S-06J NIPPLE AND A
HAW-046J6J-5

ALL RATIO PUMPS:
REFINEMENT AIR HOSE - HA-0324-XX
CATALYST HOSE - HC-0224-XX
CHOPPER AIR HOSE - HA-0644-XX
CATALYST ATOMIZING AIR HOSE - HA-0224-XX

XX = HOSE LENGTH DESIRED (25 FT. IS STD.)

**ATC-4000-FIT
CHOPPER GUN
09-22-12
PARTS KEY, PAGE 2**

OPTIONAL EQUIPMENT:

ATC-40611-1 .020" CATALYST RESTRICTOR

ATC-40314 CARTRIDGE ASSEMBLY WHICH INCLUDES
ITEMS 4 - 11 AND ATC-40323-BT

ATC-40323-A-TL 5/16 NUT DRIVER

ATC-40323-BT TOOL FOR ATC-40323-B

ATC-40103-1 TRIGGER VALVE O-RING TOOL

ATC-40204-1 CAT. VALVE O-RING TOOL

MG-1018-CL ALUMINUM RETAINING RING

FMT-40402-3 FMT STYLE CATALYST TIP

FMT-XXXX-HT FMT STYLE SPRAY TIP

NOTE A:

TRIGGER VALVE O-RINGS ARE MADE OF EPR
RUBBER AND CAN ONLY BE LUBRICATED WITH
"SUPER O LUBE"

NOTE B:

ATC-4001 HEAD ASSEMBLY INCLUDES ITEM
20. ATC-40206, ITEM 9. O-S-012A, ITEM
64. F-SS-1032-02-SS, AND ITEM
65. ATC-40616